

Product datasheet for **TA336127**

FAM102B Rabbit Polyclonal Antibody

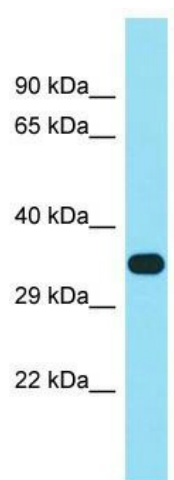
Product data:

Product Type:	Primary Antibodies
Applications:	WB
Recommended Dilution:	WB
Reactivity:	Human
Host:	Rabbit
Isotype:	IgG
Clonality:	Polyclonal
Immunogen:	The immunogen for Anti-FAM102B Antibody is: synthetic peptide directed towards the C-terminal region of Human FAM102B. Synthetic peptide located within the following region: SQQSKVSGYSTCHSRSSSFSELCHRRNTSVGSTSTGVESILEPCDEIEQK
Formulation:	Liquid. Purified antibody supplied in 1x PBS buffer with 0.09% (w/v) sodium azide and 2% sucrose.
Purification:	Affinity Purified
Conjugation:	Unconjugated
Storage:	Store at -20°C as received.
Stability:	Stable for 12 months from date of receipt.
Predicted Protein Size:	39 kDa
Gene Name:	family with sequence similarity 102 member B
Database Link:	NP_001010883 Entrez Gene 284611 Human Q5T8I3
Background:	The function of this protein remains unknown.
Synonyms:	SYM-3B
Note:	Immunogen Sequence Homology: Horse: 100%; Human: 100%; Dog: 93%; Pig: 93%; Rat: 93%; Mouse: 93%; Bovine: 93%; Rabbit: 93%; Guinea pig: 93%



[View online »](#)

Product images:



Host: Rabbit; Target Name: FAM102B; Sample
Tissue: 293T Whole Cell lysates; Antibody
Dilution: 1.0 ug/ml