

Product datasheet for TA336126

PTPLAD2 (HACD4) Rabbit Polyclonal Antibody

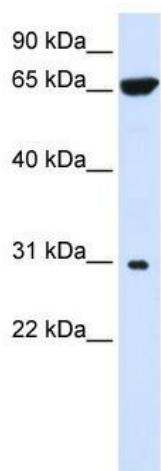
Product data:

Product Type:	Primary Antibodies
Applications:	WB
Recommended Dilution:	WB
Reactivity:	Human
Host:	Rabbit
Isotype:	IgG
Clonality:	Polyclonal
Immunogen:	The immunogen for Anti-PTPLAD2 Antibody: synthetic peptide directed towards the middle region of human PTPLAD2. Synthetic peptide located within the following region: LLHIYVGIESNHLLPRFLQLTERIIILFWVITSQEEVQEKYVVCVLFVFW
Formulation:	Liquid. Purified antibody supplied in 1x PBS buffer with 0.09% (w/v) sodium azide and 2% sucrose.
Purification:	Affinity Purified
Conjugation:	Unconjugated
Storage:	Store at -20°C as received.
Stability:	Stable for 12 months from date of receipt.
Predicted Protein Size:	27 kDa
Gene Name:	3-hydroxyacyl-CoA dehydratase 4
Database Link:	NP_001010915 Entrez Gene 401494 Human Q5VWC8
Background:	PTPLAD2 is a multi-pass membrane protein. It belongs to the PTPLA family. The function of the PTPLAD2 protein remains unknown.
Synonyms:	PTPLAD2
Note:	Immunogen Sequence Homology: Dog: 100%; Pig: 100%; Human: 100%; Rabbit: 100%; Rat: 93%; Horse: 93%; Bovine: 93%; Guinea pig: 93%; Mouse: 92%
Protein Families:	Transmembrane



[View online »](#)

Product images:



WB Suggested Anti-PTPLAD2 Antibody Titration:
0.2-1 ug/ml; ELISA Titer: 1: 1562500; Positive
Control: 293T cell lysate