

Product datasheet for **TA336125**

CALHM6 Rabbit Polyclonal Antibody

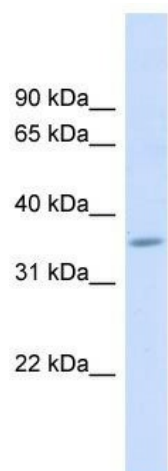
Product data:

Product Type:	Primary Antibodies
Applications:	WB
Recommended Dilution:	WB
Reactivity:	Human
Host:	Rabbit
Isotype:	IgG
Clonality:	Polyclonal
Immunogen:	The immunogen for Anti-FAM26F Antibody: synthetic peptide directed towards the middle region of human FAM26F. Synthetic peptide located within the following region: NRSCAAELPLVPCNQAKASDVQDLLKDLKAQSQVLGWILIAVVIILLIF
Formulation:	Liquid. Purified antibody supplied in 1x PBS buffer with 0.09% (w/v) sodium azide and 2% sucrose. <i>Note that this product is shipped as lyophilized powder to China customers.</i>
Purification:	Affinity Purified
Conjugation:	Unconjugated
Storage:	Store at -20°C as received.
Stability:	Stable for 12 months from date of receipt.
Predicted Protein Size:	34 kDa
Gene Name:	family with sequence similarity 26 member F
Database Link:	NP_001010919 Entrez Gene 441168 Human Q5R3K3
Background:	The function of this protein remains unknown.
Synonyms:	C6orf187; dj93H18.5; INAM
Note:	Immunogen Sequence Homology: Human: 100%; Rat: 92%; Rabbit: 92%
Protein Families:	Transmembrane



[View online »](#)

Product images:



WB Suggested Anti-FAM26F Antibody Titration:
0.2-1 ug/ml; ELISA Titer: 1: 62500; Positive
Control: Human Muscle