

Product datasheet for **TA336122**

RAP1B Rabbit Polyclonal Antibody

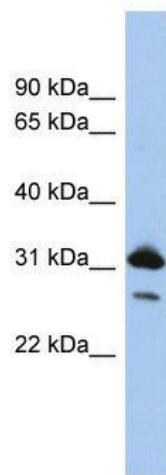
Product data:

Product Type:	Primary Antibodies
Applications:	WB
Recommended Dilution:	WB
Reactivity:	Human
Host:	Rabbit
Isotype:	IgG
Clonality:	Polyclonal
Immunogen:	The immunogen for Anti-RAP1B Antibody: synthetic peptide directed towards the N terminal of human RAP1B. Synthetic peptide located within the following region: MREYKLVVLGSGGVGKSALTVQFVQGIFVEKYDPTIEDSYRKQVEVDAQQ
Formulation:	Liquid. Purified antibody supplied in 1x PBS buffer with 0.09% (w/v) sodium azide and 2% sucrose. <i>Note that this product is shipped as lyophilized powder to China customers.</i>
Purification:	Affinity Purified
Conjugation:	Unconjugated
Storage:	Store at -20°C as received.
Stability:	Stable for 12 months from date of receipt.
Predicted Protein Size:	21 kDa
Gene Name:	RAP1B, member of RAS oncogene family
Database Link:	NP_001010942 Entrez Gene 5908 Human P61224



[View online »](#)

Background:	RAP1B and RAP1A (MIM 179520) belong to a superfamily of RAS (see MIM 190020)-like small GTP-binding proteins involved in cell signaling. RAP1B and RAP1A (MIM 179520) belong to a superfamily of RAS (see MIM 190020)-like small GTP-binding proteins involved in cell signaling. [supplied by OMIM]. Publication Note: This RefSeq record includes a subset of the publications that are available for this gene. Please see the Entrez Gene record to access additional publications. PRIMARYREFSEQ_SPAN PRIMARY_IDENTIFIER PRIMARY_SPAN COMP 1-72 BG717530.1 20-91 73-172 BC000176.3 1-100 173-2026 BC000176.3 110-1963 2027-2117 AA809981.1 1-91 c
Synonyms:	K-REV; RAL1B
Note:	Immunogen Sequence Homology: Dog: 100%; Pig: 100%; Rat: 100%; Goat: 100%; Horse: 100%; Human: 100%; Mouse: 100%; Bovine: 100%; Rabbit: 100%; Zebrafish: 100%; Guinea pig: 100%
Protein Families:	Druggable Genome
Protein Pathways:	Chemokine signaling pathway, Focal adhesion, Leukocyte transendothelial migration, Long-term potentiation, MAPK signaling pathway, Neurotrophin signaling pathway, Renal cell carcinoma

Product images:

WB Suggested Anti-RAP1B Antibody Titration: 0.2-1 ug/ml; ELISA Titer: 1:1562500; Positive Control: PANC1 cell lysate. RAP1B is supported by BioGPS gene expression data to be expressed in PANC1