

Product datasheet for **TA336121**

LDLRAD1 Rabbit Polyclonal Antibody

Product data:

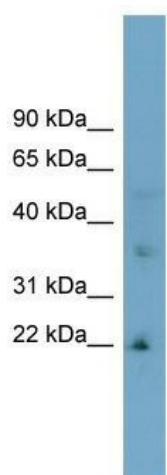
Product Type:	Primary Antibodies
Applications:	WB
Recommended Dilution:	WB
Reactivity:	Human
Host:	Rabbit
Isotype:	IgG
Clonality:	Polyclonal
Immunogen:	The immunogen for Anti-LDLRAD1 Antibody: synthetic peptide directed towards the middle region of human LDLRAD1. Synthetic peptide located within the following region: DEDESLCRDVPQSLPHFLVAHCGDPASWIYSDQKCDGTNNGDCSDELSP
Formulation:	Liquid. Purified antibody supplied in 1x PBS buffer with 0.09% (w/v) sodium azide and 2% sucrose. <i>Note that this product is shipped as lyophilized powder to China customers.</i>
Purification:	Affinity Purified
Conjugation:	Unconjugated
Storage:	Store at -20°C as received.
Stability:	Stable for 12 months from date of receipt.
Predicted Protein Size:	22 kDa
Gene Name:	low density lipoprotein receptor class A domain containing 1
Database Link:	NP_001010978 Entrez Gene 388633 Human Q5T700
Background:	The function of this protein remains unknown.
Synonyms:	low density lipoprotein receptor A domain containing 1; low density lipoprotein receptor class A domain containing 1; OTTHUMP00000010102
Note:	Immunogen Sequence Homology: Human: 100%; Pig: 93%; Horse: 93%; Mouse: 91%; Bovine: 86%; Dog: 85%; Rat: 85%; Guinea pig: 85%



[View online »](#)

Protein Families: Transmembrane

Product images:



WB Suggested Anti-LDLRAD1 Antibody Titration:
0.2-1 ug/ml; Positive Control: PANC1 cell lysate