

Product datasheet for **TA336116**

PDLIM5 Rabbit Polyclonal Antibody

Product data:

Product Type:	Primary Antibodies
Applications:	WB
Recommended Dilution:	WB
Reactivity:	Human
Host:	Rabbit
Isotype:	IgG
Clonality:	Polyclonal
Immunogen:	The immunogen for Anti-PDLIM5 Antibody: synthetic peptide directed towards the middle region of human PDLIM5. Synthetic peptide located within the following region: RTGTTQSRFRILAQITGTEHLKESEADNTKKANNSQEPSPQLASSVAST
Formulation:	Liquid. Purified antibody supplied in 1x PBS buffer with 0.09% (w/v) sodium azide and 2% sucrose. <i>Note that this product is shipped as lyophilized powder to China customers.</i>
Purification:	Protein A purified
Conjugation:	Unconjugated
Storage:	Store at -20°C as received.
Stability:	Stable for 12 months from date of receipt.
Predicted Protein Size:	54 kDa
Gene Name:	PDZ and LIM domain 5
Database Link:	NP_001011513 Entrez Gene 10611 Human Q96HC4



[View online »](#)

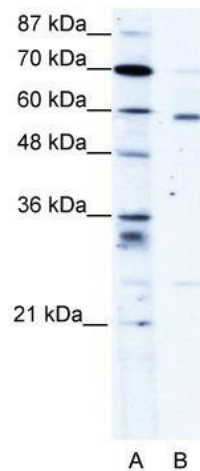
Background: PDLIM5 is a LIM domain protein. LIM domains are cysteine-rich double zinc fingers composed of 50 to 60 amino acids that are involved in protein-protein interactions. LIM domain-containing proteins are scaffolds for the formation of multiprotein complexes. The proteins are involved in cytoskeleton organization, cell lineage specification, organ development, and oncogenesis. The encoded protein is also a member of the Enigma class of proteins, a family of proteins that possess a 100-amino acid PDZ domain in the N terminus and 1 to 3 LIM domains in the C terminus. Multiple transcript variants encoding different isoforms have been found for this gene, although not all of them have been fully characterized.

Synonyms: ENH; ENH1; L9; LIM

Note: Immunogen Sequence Homology: Human: 100%; Bovine: 100%; Rabbit: 100%; Pig: 93%; Rat: 93%; Horse: 93%; Mouse: 86%; Guinea pig: 86%; Dog: 79%

Protein Families: Druggable Genome

Product images:



WB Suggested Anti-PDLIM5 Antibody Titration: 1.25 ug/ml; ELISA Titer: 1:312500; Positive Control: HepG2 cell lysate; There is BioGPS gene expression data showing that PDLIM5 is expressed in HepG2