

## Product datasheet for **TA336114**

### CLEC18B Rabbit Polyclonal Antibody

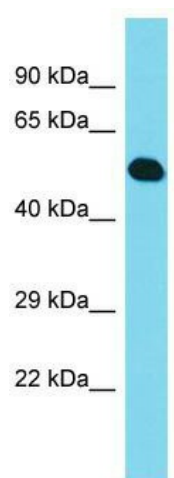
#### Product data:

Product Type:	Primary Antibodies
Applications:	WB
Recommended Dilution:	WB
Reactivity:	Human
Host:	Rabbit
Isotype:	IgG
Clonality:	Polyclonal
Immunogen:	The immunogen for Anti-CLEC18B Antibody is: synthetic peptide directed towards the C-terminal region of Human CLEC18B. Synthetic peptide located within the following region: DLRIDGDCFMVSSEADTYRARMKQCQRKGGVLAQIKSQKVQDILAFYLGR
Formulation:	Liquid. Purified antibody supplied in 1x PBS buffer with 0.09% (w/v) sodium azide and 2% sucrose.
Purification:	Affinity Purified
Conjugation:	Unconjugated
Storage:	Store at -20°C as received.
Stability:	Stable for 12 months from date of receipt.
Predicted Protein Size:	49 kDa
Gene Name:	C-type lectin domain family 18 member B
Database Link:	<a href="#">NP_001011880</a> <a href="#">Entrez Gene 497190 Human</a> <a href="#">Q6UXF7</a>
Background:	The function of this protein remains unknown.
Synonyms:	MRCL2
Note:	Immunogen Sequence Homology: Human: 100%; Dog: 93%; Pig: 93%; Rat: 93%; Horse: 93%; Mouse: 93%; Bovine: 93%; Rabbit: 93%; Guinea pig: 93%



[View online »](#)

## Product images:



Host: Rabbit; Target Name: CLEC18B; Sample  
Tissue: Fetal Heart lysates; Antibody Dilution: 1.0  
ug/ml