

Product datasheet for TA336112

CRLF2 Rabbit Polyclonal Antibody

Product data:

Product Type:	Primary Antibodies
Applications:	WB
Recommended Dilution:	WB
Reactivity:	Human
Host:	Rabbit
Isotype:	IgG
Clonality:	Polyclonal
Immunogen:	The immunogen for Anti-CRLF2 Antibody: synthetic peptide directed towards the middle region of human CRLF2. Synthetic peptide located within the following region: FWVRVKAMEDVYGPDTYPSDWSEVTCWQRGEIRDACAETPTPKPKLSKF
Formulation:	Liquid. Purified antibody supplied in 1x PBS buffer with 0.09% (w/v) sodium azide and 2% sucrose. <i>Note that this product is shipped as lyophilized powder to China customers.</i>
Purification:	Affinity Purified
Conjugation:	Unconjugated
Storage:	Store at -20°C as received.
Stability:	Stable for 12 months from date of receipt.
Predicted Protein Size:	29 kDa
Gene Name:	cytokine receptor-like factor 2
Database Link:	NP_001012288 Entrez Gene 64109 Human Q9HC73
Background:	Cytokine signals are mediated through specific receptor complexes, the components of which are mostly members of the type I cytokine receptor family. Type I cytokine receptors share conserved structural features in their extracellular domain. Receptor complexes are typically heterodimeric, consisting of alpha chains, which provide ligand specificity, and beta (or gamma) chains, which are required for the formation of high-affinity binding sites and signal transduction.



[View online »](#)

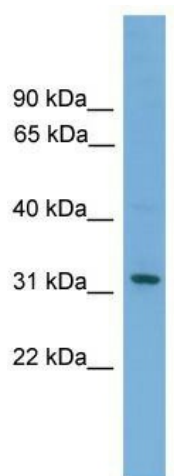
Synonyms: CRL2; CRLF2Y; TSLPR

Note: Immunogen Sequence Homology: Human: 100%

Protein Families: Druggable Genome, Secreted Protein, Transmembrane

Protein Pathways: Cytokine-cytokine receptor interaction, Jak-STAT signaling pathway

Product images:



WB Suggested Anti-CRLF2 Antibody Titration: 0.2-1 ug/ml; ELISA Titer: 1: 312500; Positive Control: 721_B cell lysate