

## Product datasheet for **TA336109**

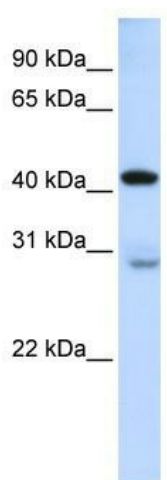
### GRAMD2A Rabbit Polyclonal Antibody

#### Product data:

Product Type:	Primary Antibodies
Applications:	WB
Recommended Dilution:	WB
Reactivity:	Human
Host:	Rabbit
Isotype:	IgG
Clonality:	Polyclonal
Immunogen:	The immunogen for Anti-GRAMD2 Antibody: synthetic peptide directed towards the middle region of human GRAMD2. Synthetic peptide located within the following region: LPNGLAITNTSQQYIFVSLLSRDSVYDLLRRVCTHLQPSSKKSLSVREF
Formulation:	Liquid. Purified antibody supplied in 1x PBS buffer with 0.09% (w/v) sodium azide and 2% sucrose.
Purification:	Affinity Purified
Conjugation:	Unconjugated
Storage:	Store at -20°C as received.
Stability:	Stable for 12 months from date of receipt.
Predicted Protein Size:	40 kDa
Gene Name:	GRAM domain containing 2
Database Link:	<a href="#">NP_001012660</a> <a href="#">Entrez Gene 196996 Human</a> <a href="#">Q8IUJ3</a>
Background:	The exact function of GRAMD2 remains unknown.
Synonyms:	GRAM domain containing 2
Note:	Immunogen Sequence Homology: Dog: 100%; Pig: 100%; Human: 100%; Guinea pig: 100%; Rat: 93%; Horse: 93%; Mouse: 93%; Bovine: 93%; Rabbit: 86%
Protein Families:	Transmembrane



[View online »](#)

**Product images:**


WB Suggested Anti-GRAMD2 Antibody Titration:  
0.2-1 ug/ml; ELISA Titer: 1: 312500; Positive  
Control: Human Lung