

Product datasheet for **TA336106**

NHLRC3 Rabbit Polyclonal Antibody

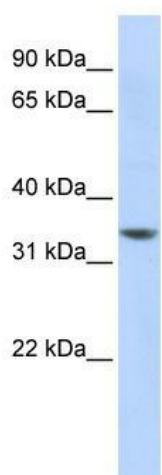
Product data:

Product Type:	Primary Antibodies
Applications:	WB
Recommended Dilution:	WB
Reactivity:	Human
Host:	Rabbit
Isotype:	IgG
Clonality:	Polyclonal
Immunogen:	The immunogen for Anti-RP11-50D16.3 Antibody: synthetic peptide directed towards the middle region of human RP11-50D16.3. Synthetic peptide located within the following region: LVQVLGTPGKKGKTSLNPLQFDNPAELYVEDTGDIYVDGDGGLNNRLIKL
Formulation:	Liquid. Purified antibody supplied in 1x PBS buffer with 0.09% (w/v) sodium azide and 2% sucrose.
Purification:	Affinity Purified
Conjugation:	Unconjugated
Storage:	Store at -20°C as received.
Stability:	Stable for 12 months from date of receipt.
Predicted Protein Size:	38 kDa
Gene Name:	NHL repeat containing 3
Database Link:	NP_001012772 Entrez Gene 387921 Human Q5JS37
Background:	RP11-50D16.3 contains 4 NHL repeats. The function of the RP11-50D16.3 protein remains unknown.
Synonyms:	DKFZp313M1221; DKFZp686E1140
Note:	Immunogen Sequence Homology: Dog: 100%; Pig: 100%; Rat: 100%; Horse: 100%; Human: 100%; Rabbit: 100%; Guinea pig: 100%; Mouse: 93%; Bovine: 86%; Zebrafish: 75%
Protein Families:	Transmembrane



[View online »](#)

Product images:



WB Suggested Anti-RP11-50D16.3 Antibody
Titration: 0.2-1 ug/ml; ELISA Titer: 1: 312500;
Positive Control: HepG2 cell lysate