

Product datasheet for **TA336105**

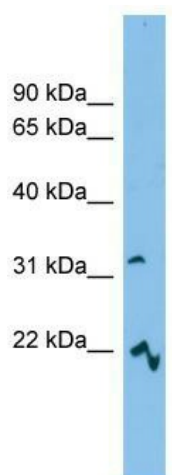
MCART6 (SLC25A53) Rabbit Polyclonal Antibody

Product data:

Product Type:	Primary Antibodies
Applications:	WB
Recommended Dilution:	WB
Reactivity:	Human
Host:	Rabbit
Isotype:	IgG
Clonality:	Polyclonal
Immunogen:	The immunogen for Anti-MCART6 Antibody: synthetic peptide directed towards the middle region of human MCART6. Synthetic peptide located within the following region: WPVLARNSLGSLYFSFKDPIQDGLAEQGLPHWVPALVSGSVNGTITCLV
Formulation:	Liquid. Purified antibody supplied in 1x PBS buffer with 0.09% (w/v) sodium azide and 2% sucrose.
Purification:	Affinity Purified
Conjugation:	Unconjugated
Storage:	Store at -20°C as received.
Stability:	Stable for 12 months from date of receipt.
Predicted Protein Size:	34 kDa
Gene Name:	solute carrier family 25 member 53
Database Link:	NP_001012773 Entrez Gene 401612 Human Q5H9E4
Background:	The function of this protein remains unknown.
Synonyms:	MCART6
Note:	Immunogen Sequence Homology: Dog: 100%; Pig: 100%; Rat: 100%; Human: 100%; Guinea pig: 100%; Mouse: 93%; Horse: 86%; Bovine: 86%; Rabbit: 86%
Protein Families:	Transmembrane


[View online »](#)

Product images:



WB Suggested Anti-MCART6 Antibody Titration:
0.2-1 ug/ml; ELISA Titer: 1: 312500; Positive
Control: HeLa cell lysate