

Product datasheet for **TA336102**

CXorf66 Rabbit Polyclonal Antibody

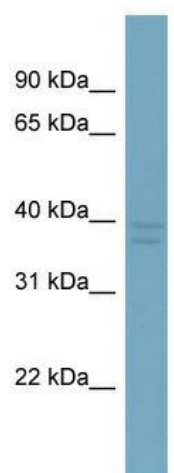
Product data:

Product Type:	Primary Antibodies
Applications:	WB
Recommended Dilution:	WB
Reactivity:	Human
Host:	Rabbit
Isotype:	IgG
Clonality:	Polyclonal
Immunogen:	The immunogen for Anti-CXorf66 Antibody: synthetic peptide directed towards the middle region of human CXorf66. Synthetic peptide located within the following region: PETQPMLSTADKSSDSSSPERASAQSSTEKLIRPSSLQKPSIPNSAGKLT
Formulation:	Liquid. Purified antibody supplied in 1x PBS buffer with 0.09% (w/v) sodium azide and 2% sucrose.
Purification:	Affinity Purified
Conjugation:	Unconjugated
Storage:	Store at -20°C as received.
Stability:	Stable for 12 months from date of receipt.
Predicted Protein Size:	40 kDa
Gene Name:	chromosome X open reading frame 66
Database Link:	NP_001013421 Entrez Gene 347487 Human Q5JRM2
Background:	The protein encoded by this gene is predicted to be a type I membrane protein, however, its exact function is not known.
Synonyms:	SGPX
Note:	Immunogen Sequence Homology: Human: 100%
Protein Families:	Transmembrane



[View online »](#)

Product images:



WB Suggested Anti-CXorf66 Antibody Titration:
0.2-1 ug/ml; Positive Control: ACHN cell lysate