

## Product datasheet for **TA336101**

### DGAT2L3 (AWAT1) Rabbit Polyclonal Antibody

#### Product data:

Product Type:	Primary Antibodies
Applications:	WB
Recommended Dilution:	WB
Reactivity:	Human
Host:	Rabbit
Isotype:	IgG
Clonality:	Polyclonal
Immunogen:	The immunogen for Anti-AWAT1 Antibody: synthetic peptide directed towards the N terminal of human AWAT1. Synthetic peptide located within the following region: LLTFGAFCNFCTEATGFSKTFPGITPHLATLSWFFKIPFVREYLMAGVC
Formulation:	Liquid. Purified antibody supplied in 1x PBS buffer with 0.09% (w/v) sodium azide and 2% sucrose. <i>Note that this product is shipped as lyophilized powder to China customers.</i>
Purification:	Affinity Purified
Conjugation:	Unconjugated
Storage:	Store at -20°C as received.
Stability:	Stable for 12 months from date of receipt.
Predicted Protein Size:	38 kDa
Gene Name:	acyl-CoA wax alcohol acyltransferase 1
Database Link:	<a href="#">NP_001013597</a> <a href="#">Entrez Gene 158833 Human</a> <a href="#">Q58HT5</a>
Background:	The protein encoded by this gene belongs to the diacylglycerol acyltransferase family. It esterifies long chain (wax) alcohols with acyl-CoA-derived fatty acids to produce wax esters. Wax esters are enriched in sebum, suggesting that this enzyme plays a central role in lipid metabolism in skin. Consistent with this observation, this protein is predominantly expressed in the sebaceous gland of the skin.
Synonyms:	DGA2; DGAT2L3

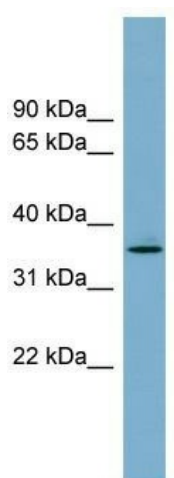


[View online »](#)

**Note:** Immunogen Sequence Homology: Rat: 100%; Human: 100%; Mouse: 100%; Dog: 93%; Pig: 93%; Horse: 93%; Guinea pig: 93%; Zebrafish: 92%; Bovine: 86%; Rabbit: 79%

**Protein Families:** Transmembrane

**Product images:**



WB Suggested Anti-AWAT1 Antibody Titration:  
0.2-1 ug/ml; Positive Control: Human Spleen