

Product datasheet for **TA336099**

C1ORF190 (LURAP1) Rabbit Polyclonal Antibody

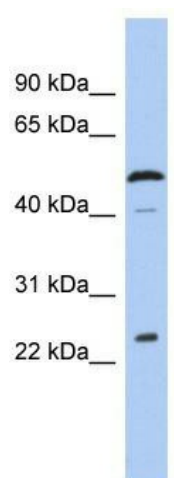
Product data:

Product Type:	Primary Antibodies
Applications:	WB
Recommended Dilution:	WB
Reactivity:	Human
Host:	Rabbit
Isotype:	IgG
Clonality:	Polyclonal
Immunogen:	The immunogen for Anti-C1orf190 Antibody: synthetic peptide directed towards the middle region of human C1orf190. Synthetic peptide located within the following region: SIGSFLDTVAPSELDEQGPPGAPRSEMDWAKVIAGGERARTEVDVAATRL
Formulation:	Liquid. Purified antibody supplied in 1x PBS buffer with 0.09% (w/v) sodium azide and 2% sucrose. <i>Note that this product is shipped as lyophilized powder to China customers.</i>
Purification:	Affinity Purified
Conjugation:	Unconjugated
Storage:	Store at -20°C as received.
Stability:	Stable for 12 months from date of receipt.
Predicted Protein Size:	26 kDa
Gene Name:	leucine rich adaptor protein 1
Database Link:	NP_001013633 Entrez Gene 541468 Human Q96LR2
Background:	The specific function of this protein remains unknown.
Synonyms:	C1orf190; LRAP35a; LRP35A
Note:	Immunogen Sequence Homology: Human: 100%; Dog: 93%; Pig: 93%; Horse: 93%; Bovine: 86%; Rabbit: 86%



[View online »](#)

Product images:



WB Suggested Anti-C1orf190 Antibody Titration:
0.2-1 ug/ml; ELISA Titer: 1:312500; Positive
Control: Jurkat cell lysate