

Product datasheet for **TA336098**

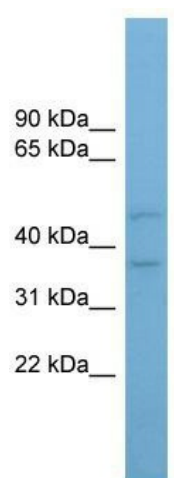
AADACL4 Rabbit Polyclonal Antibody

Product data:

| | |
|-------------------------|--|
| Product Type: | Primary Antibodies |
| Applications: | WB |
| Recommended Dilution: | WB |
| Reactivity: | Human |
| Host: | Rabbit |
| Isotype: | IgG |
| Clonality: | Polyclonal |
| Immunogen: | The immunogen for Anti-AADACL4 Antibody: synthetic peptide directed towards the middle region of human AADACL4. Synthetic peptide located within the following region: IRAQVLIYPVVQAFCLQLPSFQQNQNVPLLSRKFMVTSLCNYLAIDL SWR |
| Formulation: | Liquid. Purified antibody supplied in 1x PBS buffer with 0.09% (w/v) sodium azide and 2% sucrose. <i>Note that this product is shipped as lyophilized powder to China customers.</i> |
| Purification: | Affinity Purified |
| Conjugation: | Unconjugated |
| Storage: | Store at -20°C as received. |
| Stability: | Stable for 12 months from date of receipt. |
| Predicted Protein Size: | 46 kDa |
| Gene Name: | arylacetamide deacetylase like 4 |
| Database Link: | NP_001013652 Entrez Gene 343066 Human Q5VUY2 |
| Background: | The function of this protein remains unknown. |
| Synonyms: | arylacetamide deacetylase-like 4; OTTHUMP00000001872 |
| Note: | Immunogen Sequence Homology: Human: 100%; Rabbit: 91%; Rat: 85%; Pig: 83%; Mouse: 82%; Guinea pig: 82%; Dog: 77%; Horse: 75% |
| Protein Families: | Transmembrane |



[View online »](#)

Product images:

WB Suggested Anti-AADACL4 Antibody Titration:
0.2-1 ug/ml; ELISA Titer: 1: 62500; Positive
Control: PANC1 cell lysate