

Product datasheet for **TA336097**

AADACL4 Rabbit Polyclonal Antibody

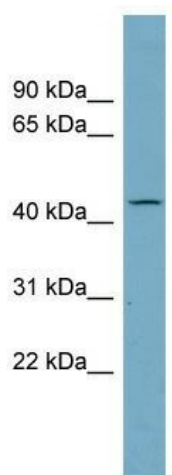
Product data:

Product Type:	Primary Antibodies
Applications:	WB
Recommended Dilution:	WB
Reactivity:	Human
Host:	Rabbit
Isotype:	IgG
Clonality:	Polyclonal
Immunogen:	The immunogen for Anti-AADACL4 Antibody: synthetic peptide directed towards the N terminal of human AADACL4. Synthetic peptide located within the following region: FIRFLHDSVRIKKDPELVVTDLRFGTIPVRLFQPKAASSRPRRGIIFYHG
Formulation:	Liquid. Purified antibody supplied in 1x PBS buffer with 0.09% (w/v) sodium azide and 2% sucrose. <i>Note that this product is shipped as lyophilized powder to China customers.</i>
Purification:	Affinity Purified
Conjugation:	Unconjugated
Storage:	Store at -20°C as received.
Stability:	Stable for 12 months from date of receipt.
Predicted Protein Size:	46 kDa
Gene Name:	arylacetamide deacetylase like 4
Database Link:	NP_001013652 Entrez Gene 343066 Human Q5VUY2
Background:	The function of this protein remains unknown.
Synonyms:	arylacetamide deacetylase-like 4; OTTHUMP00000001872
Note:	Immunogen Sequence Homology: Pig: 100%; Rat: 100%; Human: 100%; Guinea pig: 100%; Mouse: 92%; Rabbit: 86%; Horse: 83%
Protein Families:	Transmembrane



[View online »](#)

Product images:



WB Suggested Anti-AADACL4 Antibody Titration:
0.2-1 ug/ml; Positive Control: Human Thymus