

Product datasheet for **TA336095**

LRRC26 Rabbit Polyclonal Antibody

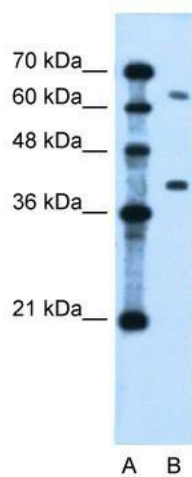
Product data:

Product Type:	Primary Antibodies
Applications:	WB
Recommended Dilution:	WB
Reactivity:	Human
Host:	Rabbit
Isotype:	IgG
Clonality:	Polyclonal
Immunogen:	The immunogen for Anti-LRRC26 Antibody: synthetic peptide directed towards the middle region of human LRRC26. Synthetic peptide located within the following region: LRPLCAWLRRHPLPASEAETVLCVWPGRLTSLPLTAFSDAAFHCAQPLA
Formulation:	Liquid. Purified antibody supplied in 1x PBS buffer with 0.09% (w/v) sodium azide and 2% sucrose. <i>Note that this product is shipped as lyophilized powder to China customers.</i>
Purification:	Affinity Purified
Conjugation:	Unconjugated
Storage:	Store at -20°C as received.
Stability:	Stable for 12 months from date of receipt.
Predicted Protein Size:	37 kDa
Gene Name:	leucine rich repeat containing 26
Database Link:	NP_001013675 Entrez Gene 389816 Human Q2I0M4
Background:	The function remains unknown.
Synonyms:	bA350O14.10; CAPC
Note:	Immunogen Sequence Homology: Dog: 100%; Human: 100%; Bovine: 93%; Horse: 83%; Pig: 77%; Guinea pig: 77%
Protein Families:	Transmembrane



[View online »](#)

Product images:



WB Suggested Anti-LRRC26 Antibody Titration:
0.2-1 ug/ml; Positive Control: Jurkat cell lysate