

Product datasheet for **TA336094**

VSIG8 Rabbit Polyclonal Antibody

Product data:

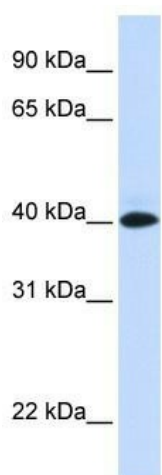
Product Type:	Primary Antibodies
Applications:	WB
Recommended Dilution:	WB
Reactivity:	Human
Host:	Rabbit
Isotype:	IgG
Clonality:	Polyclonal
Immunogen:	The immunogen for Anti-VSIG8 Antibody: synthetic peptide directed towards the N terminal of human VSIG8. Synthetic peptide located within the following region: HRENVFLSYQDKRINHGSLPHLQQRVRFASDPSQYDASINLMNLQVSDT
Formulation:	Liquid. Purified antibody supplied in 1x PBS buffer with 0.09% (w/v) sodium azide and 2% sucrose. <i>Note that this product is shipped as lyophilized powder to China customers.</i>
Purification:	Affinity Purified
Conjugation:	Unconjugated
Storage:	Store at -20°C as received.
Stability:	Stable for 12 months from date of receipt.
Predicted Protein Size:	44 kDa
Gene Name:	V-set and immunoglobulin domain containing 8
Database Link:	NP_001013683 Entrez Gene 391123 Human P0DPA2
Background:	VSIG8 contains 2 Ig-like V-type (immunoglobulin-like) domains. VSIG8 is single-pass type I membrane protein. The function of the VSIG8 protein remains unknown.
Synonyms:	OTTHUMP00000033460; V-set and immunoglobulin domain containing 8
Note:	Immunogen Sequence Homology: Dog: 100%; Pig: 100%; Rat: 100%; Horse: 100%; Human: 100%; Mouse: 100%; Bovine: 100%; Rabbit: 100%; Guinea pig: 93%



[View online »](#)

Protein Families: Transmembrane

Product images:



WB Suggested Anti-VSIG8 Antibody Titration: 0.2-1 ug/ml; ELISA Titer: 1: 1562500; Positive Control: Human Muscle