

## Product datasheet for **TA336093**

### Cyb5r2 Rabbit Polyclonal Antibody

#### Product data:

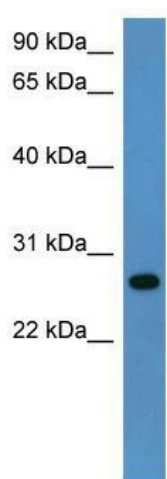
Product Type:	Primary Antibodies
Applications:	WB
Recommended Dilution:	WB
Reactivity:	Rat
Host:	Rabbit
Isotype:	IgG
Clonality:	Polyclonal
Immunogen:	The immunogen for Anti-Cyb5r2 Antibody: synthetic peptide corresponding to a region of Rat. Synthetic peptide located within the following region: WEYSSGFITADMIKEHLPPPGEATLILVCGPPPLIQEAAHPSLEQLGYTK
Formulation:	Liquid. Purified antibody supplied in 1x PBS buffer with 0.09% (w/v) sodium azide and 2% sucrose. <i>Note that this product is shipped as lyophilized powder to China customers.</i>
Purification:	Affinity Purified
Conjugation:	Unconjugated
Storage:	Store at -20°C as received.
Stability:	Stable for 12 months from date of receipt.
Predicted Protein Size:	30 kDa
Gene Name:	cytochrome b5 reductase 2
Database Link:	<a href="#">NP_001014266</a> <a href="#">Entrez Gene 365345 Rat</a> <a href="#">Q6AY12</a>
Background:	NADH-cytochrome b5 reductases are involved in desaturation and elongation of fatty acids, cholesterol biosynthesis, drug metabolism, and, in erythrocyte, methemoglobin reduction. Cyb5r2 is responsible for NADH-dependent lucigenin chemiluminescence in spermatozoa by reducing both lucigenin and 2-[4-iodophenyl]-3-[4-nitrophenyl]-5-[2,4-disulfophenyl]-2H tetrazolium monosodium salt (WST-1).
Synonyms:	B5R.2



[View online »](#)

**Note:** Immunogen Sequence Homology: Rat: 100%; Human: 100%; Rabbit: 100%; Dog: 92%; Pig: 92%; Mouse: 92%; Bovine: 92%; Guinea pig: 92%; Horse: 85%

### Product images:



WB Suggested Anti-Cyb5r2 Antibody Titration:  
0.2-1 ug/ml; ELISA Titer: 1: 312500; Positive  
Control: Rat Lung