

Product datasheet for TA336092

CUTA Rabbit Polyclonal Antibody

Product data:

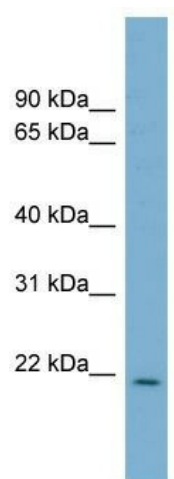
Product Type:	Primary Antibodies
Applications:	WB
Recommended Dilution:	WB
Reactivity:	Human
Host:	Rabbit
Isotype:	IgG
Clonality:	Polyclonal
Immunogen:	The immunogen for Anti-CUTA Antibody: synthetic peptide directed towards the middle region of human CUTA. Synthetic peptide located within the following region: AFVTCNPNEKVAKEIARAVVEKRLAACVNLIPQITSYEWKKGKIEEDSEVL
Formulation:	Liquid. Purified antibody supplied in 1x PBS buffer with 0.09% (w/v) sodium azide and 2% sucrose. <i>Note that this product is shipped as lyophilized powder to China customers.</i>
Purification:	Affinity Purified
Conjugation:	Unconjugated
Storage:	Store at -20°C as received.
Stability:	Stable for 12 months from date of receipt.
Predicted Protein Size:	19 kDa
Gene Name:	cutA divalent cation tolerance homolog (E. coli)
Database Link:	NP_001014840 Entrez Gene 51596 Human O60888
Background:	CUTA may forms part of a complex of membrane proteins attached to acetylcholinesterase (AChE).
Synonyms:	ACHAP; C6orf82
Note:	Immunogen Sequence Homology: Dog: 100%; Pig: 100%; Rat: 100%; Horse: 100%; Human: 100%; Mouse: 100%; Bovine: 100%; Rabbit: 100%; Guinea pig: 100%



[View online »](#)

Protein Families: Transmembrane

Product images:



WB Suggested Anti-CUTA Antibody Titration: 0.2-1 ug/ml; Positive Control: THP-1 cell lysate