

Product datasheet for TA336091

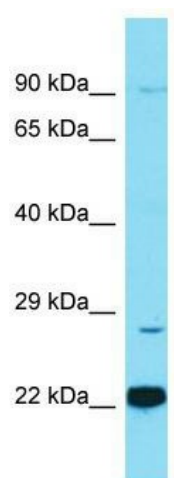
C1QTNF12 Rabbit Polyclonal Antibody

Product data:

Product Type:	Primary Antibodies
Applications:	WB
Recommended Dilution:	WB
Reactivity:	Human
Host:	Rabbit
Isotype:	IgG
Clonality:	Polyclonal
Immunogen:	The immunogen for Anti-FAM132A Antibody is: synthetic peptide directed towards the N-terminal region of Human FAM132A. Synthetic peptide located within the following region: MRRWAWAAVVLLGPQLVLLGGVGARREAQRTQPGQQRADPPNATASASS
Formulation:	Liquid. Purified antibody supplied in 1x PBS buffer with 0.09% (w/v) sodium azide and 2% sucrose.
Purification:	Affinity Purified
Conjugation:	Unconjugated
Storage:	Store at -20°C as received.
Stability:	Stable for 12 months from date of receipt.
Predicted Protein Size:	30 kDa
Gene Name:	family with sequence similarity 132 member A
Database Link:	NP_001014980 Entrez Gene 388581 Human Q5T7M4
Background:	The function of this protein remains unknown.
Synonyms:	C1QDC2; C1QTNF12; CTRP12
Note:	Immunogen Sequence Homology: Human: 100%; Zebrafish: 82%
Protein Families:	Transmembrane


[View online »](#)

Product images:



Host: Rabbit; Target Name: FAM132A; Sample
Tissue: MCF7 Whole Cell lysates; Antibody
Dilution: 1.0 ug/ml