

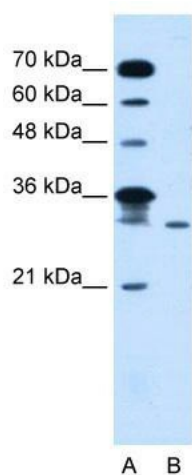
Product datasheet for **TA336090**

GLTPD2 Rabbit Polyclonal Antibody

Product data:

Product Type:	Primary Antibodies
Applications:	WB
Recommended Dilution:	WB
Reactivity:	Human
Host:	Rabbit
Isotype:	IgG
Clonality:	Polyclonal
Immunogen:	The immunogen for Anti-GLTPD2 Antibody: synthetic peptide directed towards the middle region of human LOC388323. Synthetic peptide located within the following region: LAAMAAWERRAGLLEQPGAAPRDPTRSSGSRTLLLLHRALRWSQLCLHRV
Formulation:	Liquid. Purified antibody supplied in 1x PBS buffer with 0.09% (w/v) sodium azide and 2% sucrose.
Purification:	Protein A purified
Conjugation:	Unconjugated
Storage:	Store at -20°C as received.
Stability:	Stable for 12 months from date of receipt.
Predicted Protein Size:	32 kDa
Gene Name:	glycolipid transfer protein domain containing 2
Database Link:	NP_001014985 Entrez Gene 388323 Human
Background:	The function remains unknown.
Synonyms:	glycolipid transfer protein domain containing 2
Note:	Immunogen Sequence Homology: Human: 100%
Protein Families:	Transmembrane


[View online »](#)

Product images:

WB Suggested Anti-GLTPD2 Antibody Titration:
5.0 ug/ml; Positive Control: Jurkat cell lysate