

Product datasheet for **TA336086**

MPG Rabbit Polyclonal Antibody

Product data:

Product Type:	Primary Antibodies
Applications:	WB
Recommended Dilution:	WB
Reactivity:	Human
Host:	Rabbit
Isotype:	IgG
Clonality:	Polyclonal
Immunogen:	The immunogen for Anti-MPG Antibody: synthetic peptide directed towards the middle region of human MPG. Synthetic peptide located within the following region: QRDLAQDEAVWLERGPLEPSEPAVVAARVGVGHAGEWARKPLRFYVRGS
Formulation:	Liquid. Purified antibody supplied in 1x PBS buffer with 0.09% (w/v) sodium azide and 2% sucrose. <i>Note that this product is shipped as lyophilized powder to China customers.</i>
Purification:	Affinity Purified
Conjugation:	Unconjugated
Storage:	Store at -20°C as received.
Stability:	Stable for 12 months from date of receipt.
Predicted Protein Size:	31 kDa
Gene Name:	N-methylpurine DNA glycosylase
Database Link:	NP_001015054 Entrez Gene 4350 Human P29372
Background:	MPG functions in the hydrolysis of the deoxyribose N-glycosidic bond to excise 3-methyladenine, and 7-methylguanine from the damaged DNA polymer formed by alkylation lesions.
Synonyms:	AAG; ADPG; anpg; APNG; CRA36.1; MDG; Mid1; PIG11; PIG16
Note:	Immunogen Sequence Homology: Human: 100%; Bovine: 86%; Dog: 79%; Rat: 79%; Horse: 79%

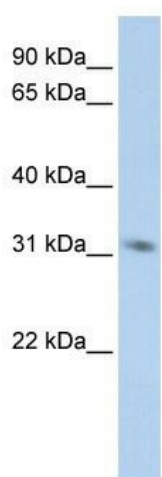


[View online »](#)

Protein Families: Druggable Genome, Transmembrane

Protein Pathways: Base excision repair

Product images:



WB Suggested Anti-MPG Antibody Titration: 0.2-1 ug/ml; ELISA Titer: 1: 62500; Positive Control: Jurkat cell lysate