

Product datasheet for **TA336083**

Ptrh2 Rabbit Polyclonal Antibody

Product data:

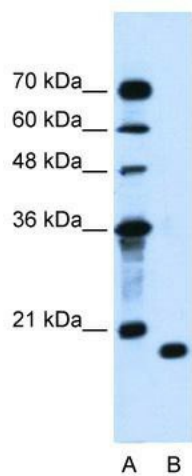
Product Type:	Primary Antibodies
Applications:	WB
Recommended Dilution:	WB
Reactivity:	Human
Host:	Rabbit
Isotype:	IgG
Clonality:	Polyclonal
Immunogen:	The immunogen for Anti-Ptrh2 Antibody: synthetic peptide directed towards the C terminal of human Ptrh2. Synthetic peptide located within the following region: RNPEMLKQWEYCGQPKVVKAPDEETLIALLAHAKMLGLTVSLIQDAGRT
Formulation:	Liquid. Purified antibody supplied in 1x PBS buffer with 0.09% (w/v) sodium azide and 2% sucrose. <i>Note that this product is shipped as lyophilized powder to China customers.</i>
Purification:	Protein A purified
Conjugation:	Unconjugated
Storage:	Store at -20°C as received.
Stability:	Stable for 12 months from date of receipt.
Predicted Protein Size:	20 kDa
Gene Name:	peptidyl-tRNA hydrolase 2
Database Link:	NP_001015509 Entrez Gene 51651 Human Q9Y3E5
Background:	The natural substrate for this enzyme may be peptidyl-tRNAs which drop off the ribosome during protein synthesis.
Synonyms:	BIT1; CFAP37; CGI-147; IMNEPD; PTH; PTH 2; PTH2
Note:	Immunogen Sequence Homology: Dog: 100%; Pig: 100%; Horse: 100%; Human: 100%; Bovine: 100%; Guinea pig: 100%; Rat: 93%; Mouse: 93%; Rabbit: 93%; Zebrafish: 92%



[View online »](#)

Protein Families: Transmembrane

Product images:



WB Suggested Anti-PTRH2 Antibody Titration:
1.25 ug/ml; Positive Control: Jurkat cell lysate