

## Product datasheet for **TA336081**

### DNAJC25 Rabbit Polyclonal Antibody

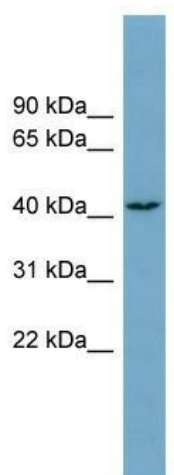
#### Product data:

Product Type:	Primary Antibodies
Applications:	WB
Recommended Dilution:	WB
Reactivity:	Human
Host:	Rabbit
Isotype:	IgG
Clonality:	Polyclonal
Immunogen:	The immunogen for Anti-DNAJC25 Antibody: synthetic peptide directed towards the middle region of human DNAJC25. Synthetic peptide located within the following region: RDEEENIIKNIKSKIDIKGGYQKPQICDLLLFQIILAPFHLCSYIVWYC
Formulation:	Liquid. Purified antibody supplied in 1x PBS buffer with 0.09% (w/v) sodium azide and 2% sucrose.
Purification:	Affinity Purified
Conjugation:	Unconjugated
Storage:	Store at -20°C as received.
Stability:	Stable for 12 months from date of receipt.
Predicted Protein Size:	42 kDa
Gene Name:	DnaJ heat shock protein family (Hsp40) member C25
Database Link:	<a href="#">NP_001015882</a> <a href="#">Entrez Gene 548645 Human</a> <a href="#">Q9H1X3</a>
Background:	The function of this protein remains unknown.
Synonyms:	bA16L21.2.1
Note:	Immunogen Sequence Homology: Dog: 100%; Pig: 100%; Rat: 100%; Horse: 100%; Human: 100%; Mouse: 100%; Bovine: 100%; Rabbit: 100%; Guinea pig: 100%; Zebrafish: 92%
Protein Families:	Transmembrane



[View online »](#)

## Product images:



WB Suggested Anti-DNAJC25 Antibody Titration:  
0.2-1 ug/ml; Positive Control: COLO205 cell lysate