

Product datasheet for **TA336080**

IGSF11 Rabbit Polyclonal Antibody

Product data:

Product Type:	Primary Antibodies
Applications:	WB
Recommended Dilution:	WB
Reactivity:	Human
Host:	Rabbit
Isotype:	IgG
Clonality:	Polyclonal
Immunogen:	The immunogen for Anti-IGSF11 Antibody: synthetic peptide directed towards the middle region of human IGSF11. Synthetic peptide located within the following region: EKLDNTLKLPTATQDQVQGTVIRNISALSSGLYQCVASNAIGTSTCLL
Formulation:	Liquid. Purified antibody supplied in 1x PBS buffer with 0.09% (w/v) sodium azide and 2% sucrose. <i>Note that this product is shipped as lyophilized powder to China customers.</i>
Purification:	Affinity Purified
Conjugation:	Unconjugated
Storage:	Store at -20°C as received.
Stability:	Stable for 12 months from date of receipt.
Predicted Protein Size:	46 kDa
Gene Name:	immunoglobulin superfamily member 11
Database Link:	NP_001015887 Entrez Gene 152404 Human Q5DX21
Background:	IGSF11 functions as a cell adhesion molecule through homophilic interaction. IGSF11 stimulates cell growth.IGSF11 is an immunoglobulin (Ig) superfamily member that is preferentially expressed in brain and testis. It shares significant homology with coxsackievirus and adenovirus receptor (CXADR; MIM 602621) and endothelial cell-selective adhesion molecule (ESAM). [supplied by OMIM]
Synonyms:	BT-IgSF; CT119; CXADRL1; Igsf13; VSIG3

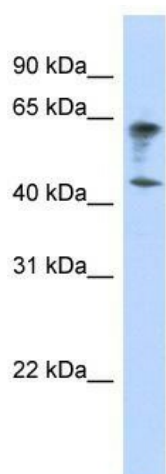


[View online »](#)

Note: Immunogen Sequence Homology: Dog: 100%; Pig: 100%; Rat: 100%; Horse: 100%; Human: 100%; Mouse: 100%; Bovine: 100%; Rabbit: 100%; Guinea pig: 100%

Protein Families: Transmembrane

Product images:



WB Suggested Anti-IGSF11 Antibody Titration:
0.2-1 ug/ml; ELISA Titer: 1: 312500; Positive
Control: Transfected 293T