

## Product datasheet for TA336077

### RPS13 Rabbit Polyclonal Antibody

#### Product data:

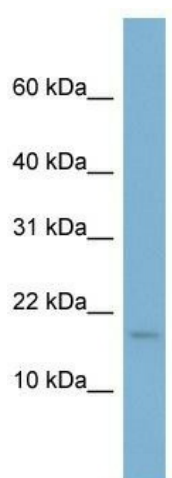
Product Type:	Primary Antibodies
Applications:	WB
Recommended Dilution:	WB
Reactivity:	Human
Host:	Rabbit
Isotype:	IgG
Clonality:	Polyclonal
Immunogen:	The immunogen for Anti-RPS13 Antibody: synthetic peptide directed towards the N terminal of human RPS13. Synthetic peptide located within the following region: MGRMHAPGKGLSQSALPYRRSVPTWLKLTSDDVKEQIYKLAKKGLTPSQI
Formulation:	Liquid. Purified antibody supplied in 1x PBS buffer with 0.09% (w/v) sodium azide and 2% sucrose. <i>Note that this product is shipped as lyophilized powder to China customers.</i>
Purification:	Affinity Purified
Conjugation:	Unconjugated
Storage:	Store at -20°C as received.
Stability:	Stable for 12 months from date of receipt.
Predicted Protein Size:	17 kDa
Gene Name:	ribosomal protein S13
Database Link:	<a href="#">NP_001008</a> <a href="#">Entrez Gene 6207 Human P62277</a>
Background:	Ribosomes, the organelles that catalyze protein synthesis, consist of a small 40S subunit and a large 60S subunit. Together these subunits are composed of 4 RNA species and approximately 80 structurally distinct proteins. This gene encodes a ribosomal pro
Synonyms:	S13
Note:	Immunogen Sequence Homology: Pig: 100%; Rat: 100%; Horse: 100%; Human: 100%; Mouse: 100%; Bovine: 100%; Rabbit: 100%; Zebrafish: 100%; Guinea pig: 100%; Dog: 93%



[View online »](#)

Protein Pathways: Ribosome

### Product images:



WB Suggested Anti-RPS13 Antibody Titration: 0.2-1 ug/ml; ELISA Titer: 1:312500; Positive Control: Jurkat cell lysate. RPS13 is supported by BioGPS gene expression data to be expressed in Jurkat