

Product datasheet for **TA336076**

S100P binding protein (S100BP) Rabbit Polyclonal Antibody

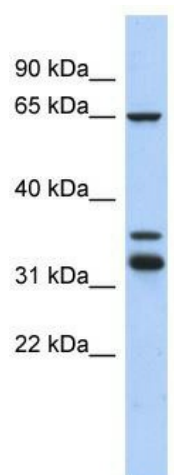
Product data:

Product Type:	Primary Antibodies
Applications:	WB
Recommended Dilution:	WB
Reactivity:	Human
Host:	Rabbit
Isotype:	IgG
Clonality:	Polyclonal
Immunogen:	The immunogen for Anti-S100BP Antibody: synthetic peptide directed towards the middle region of human S100BP. Synthetic peptide located within the following region: ERRLGKVIPVLQTKTRTNVPTFSQSNLEQQKQLYLRSVIAHIEDPEDTNQ
Formulation:	Liquid. Purified antibody supplied in 1x PBS buffer with 0.09% (w/v) sodium azide and 2% sucrose. <i>Note that this product is shipped as lyophilized powder to China customers.</i>
Purification:	Affinity Purified
Conjugation:	Unconjugated
Storage:	Store at -20°C as received.
Stability:	Stable for 12 months from date of receipt.
Predicted Protein Size:	37 kDa
Gene Name:	S100P binding protein
Database Link:	NP_001017406 Entrez Gene 64766 Human Q96BU1
Background:	The specific function of this protein remains unknown.
Synonyms:	DKFZp313K2325; FLJ12903; S100PBPR
Note:	Immunogen Sequence Homology: Human: 100%; Horse: 86%; Dog: 85%; Pig: 85%; Rat: 85%; Mouse: 85%; Bovine: 85%; Rabbit: 77%



[View online »](#)

Product images:



WB Suggested Anti-S100PBP Antibody Titration:
0.2-1 ug/ml; ELISA Titer: 1:312500; Positive
Control: 293T cell lysate. S100PBP is supported by
BioGPS gene expression data to be expressed in
HEK293T