

Product datasheet for **TA336072**

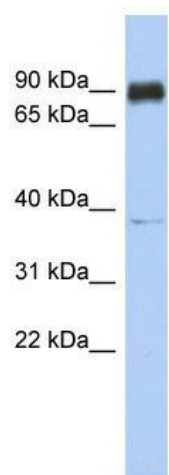
CCDC157 Rabbit Polyclonal Antibody

Product data:

Product Type:	Primary Antibodies
Applications:	WB
Recommended Dilution:	WB
Reactivity:	Human
Host:	Rabbit
Isotype:	IgG
Clonality:	Polyclonal
Immunogen:	The immunogen for Anti-CCDC157 Antibody: synthetic peptide directed towards the middle region of human LOC550631. Synthetic peptide located within the following region: DKEKARVDSMVRHQESLQAKQRALLKQLDSLQEREELRGSLDEAEAQRA
Formulation:	Liquid. Purified antibody supplied in 1x PBS buffer with 0.09% (w/v) sodium azide and 2% sucrose.
Purification:	Affinity Purified
Conjugation:	Unconjugated
Storage:	Store at -20°C as received.
Stability:	Stable for 12 months from date of receipt.
Predicted Protein Size:	83 kDa
Gene Name:	coiled-coil domain containing 157
Database Link:	NP_001017437 Entrez Gene 550631 Human Q569K6
Background:	The specific function of this protein remains unknown.
Synonyms:	4930562D19Rik; mKIAA1656; RP23-453B22.3
Note:	Immunogen Sequence Homology: Dog: 100%; Pig: 100%; Horse: 100%; Human: 100%; Mouse: 100%; Bovine: 100%; Rabbit: 100%; Rat: 93%; Guinea pig: 87%; Zebrafish: 83%



[View online »](#)

Product images:

WB Suggested Anti-CCDC157 Antibody Titration:
0.2-1 ug/ml; ELISA Titer: 1:1562500; Positive
Control: Human heart