

## Product datasheet for **TA336071**

### **MARVELD3 Rabbit Polyclonal Antibody**

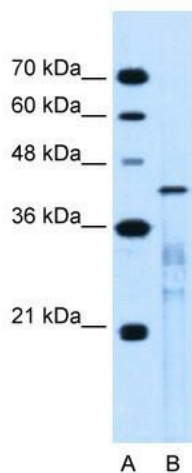
#### **Product data:**

<b>Product Type:</b>	Primary Antibodies
<b>Applications:</b>	IHC, WB
<b>Recommended Dilution:</b>	WB, IHC
<b>Reactivity:</b>	Human
<b>Host:</b>	Rabbit
<b>Isotype:</b>	IgG
<b>Clonality:</b>	Polyclonal
<b>Immunogen:</b>	The immunogen for Anti-MARVELD3 Antibody: synthetic peptide directed towards the middle region of human MARVELD3. Synthetic peptide located within the following region: SYFVLAGFSASFSSGGGFGNNYSPFEGTELEQVRQLDQQYTILRSPLIY
<b>Formulation:</b>	Liquid. Purified antibody supplied in 1x PBS buffer with 0.09% (w/v) sodium azide and 2% sucrose. <i>Note that this product is shipped as lyophilized powder to China customers.</i>
<b>Purification:</b>	Affinity Purified
<b>Conjugation:</b>	Unconjugated
<b>Storage:</b>	Store at -20°C as received.
<b>Stability:</b>	Stable for 12 months from date of receipt.
<b>Predicted Protein Size:</b>	46 kDa
<b>Gene Name:</b>	MARVEL domain containing 3
<b>Database Link:</b>	<a href="#">NP_001017967</a> <a href="#">Entrez Gene 91862 Human Q96A59</a>
<b>Background:</b>	The function remains unknown.
<b>Synonyms:</b>	MARVD3; MRVLDC3
<b>Note:</b>	Immunogen Sequence Homology: Dog: 100%; Pig: 100%; Rat: 100%; Human: 100%; Mouse: 100%; Bovine: 100%; Rabbit: 100%; Guinea pig: 86%
<b>Protein Families:</b>	Druggable Genome, Transmembrane

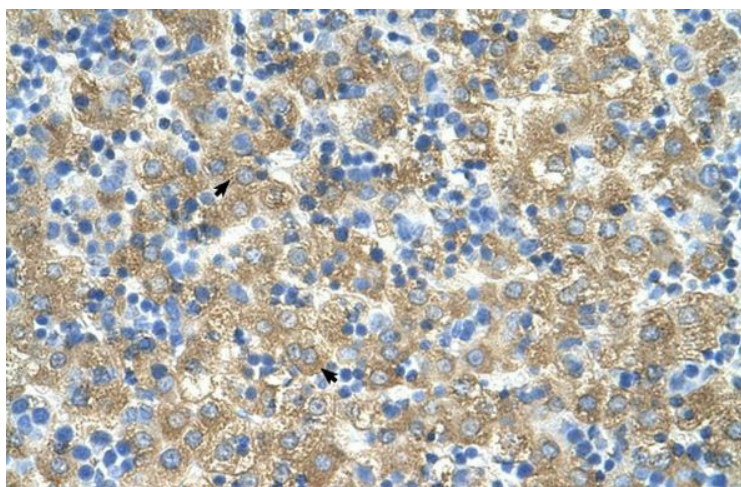


[View online »](#)

Product images:



WB Suggested Anti-MARVELD3 Antibody Titration: 0.25 ug/ml; Positive Control: Jurkat cell lysate



Human Liver