

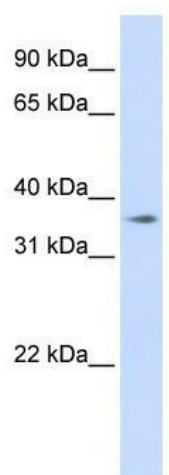
## Product datasheet for **TA336070**

### TMEM30B Rabbit Polyclonal Antibody

#### Product data:

Product Type:	Primary Antibodies
Applications:	WB
Recommended Dilution:	WB
Reactivity:	Human
Host:	Rabbit
Isotype:	IgG
Clonality:	Polyclonal
Immunogen:	The immunogen for Anti-TMEM30B Antibody: synthetic peptide directed towards the middle region of human TMEM30B. Synthetic peptide located within the following region: VYLYELTNFYQNNRRYGVSRRDQAQLSGLPSALRHPVNECAPYQRSAAAGL
Formulation:	Liquid. Purified antibody supplied in 1x PBS buffer with 0.09% (w/v) sodium azide and 2% sucrose.
Purification:	Affinity Purified
Conjugation:	Unconjugated
Storage:	Store at -20°C as received.
Stability:	Stable for 12 months from date of receipt.
Predicted Protein Size:	39 kDa
Gene Name:	transmembrane protein 30B
Database Link:	<a href="#">NP_001017970</a> <a href="#">Entrez Gene 161291 Human</a> <a href="#">Q3MIR4</a>
Background:	TMEM30B belongs to the CDC50/LEM3 family. It is a multi-pass membrane protein. The function of the TMEM30B protein remains unknown.
Synonyms:	CDC50B
Note:	Immunogen Sequence Homology: Pig: 100%; Rat: 100%; Human: 100%; Mouse: 100%; Rabbit: 100%; Guinea pig: 100%; Bovine: 93%
Protein Families:	Transmembrane


[View online »](#)

**Product images:**

WB Suggested Anti-TMEM30B Antibody Titration:  
0.2-1 ug/ml; ELISA Titer: 1: 312500; Positive  
Control: 293T cell lysate