

Product datasheet for **TA336068**

VMA21 Rabbit Polyclonal Antibody

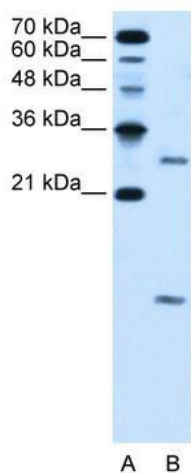
Product data:

Product Type:	Primary Antibodies
Applications:	IHC, WB
Recommended Dilution:	WB, IHC
Reactivity:	Human
Host:	Rabbit
Isotype:	IgG
Clonality:	Polyclonal
Immunogen:	The immunogen for Anti-VMA21 Antibody: synthetic peptide directed towards the N terminal of human LOC203547. Synthetic peptide located within the following region: MERPDKAALNALQPPEFRNESSLASTLKTLLFFALMITVPIGLYFTTKS
Formulation:	Liquid. Purified antibody supplied in 1x PBS buffer with 0.09% (w/v) sodium azide and 2% sucrose.
Purification:	Protein A purified
Conjugation:	Unconjugated
Storage:	Store at -20°C as received.
Stability:	Stable for 12 months from date of receipt.
Predicted Protein Size:	11 kDa
Gene Name:	VMA21 vacuolar H ⁺ -ATPase homolog (S. cerevisiae)
Database Link:	NP_001017980 Entrez Gene 203547 Human Q3ZQA7
Background:	The function remains unknown.
Synonyms:	MEAX; XMEA
Note:	Immunogen Sequence Homology: Human: 100%; Rat: 93%; Mouse: 93%; Rabbit: 93%; Pig: 92%; Bovine: 92%; Dog: 86%
Protein Families:	Transmembrane

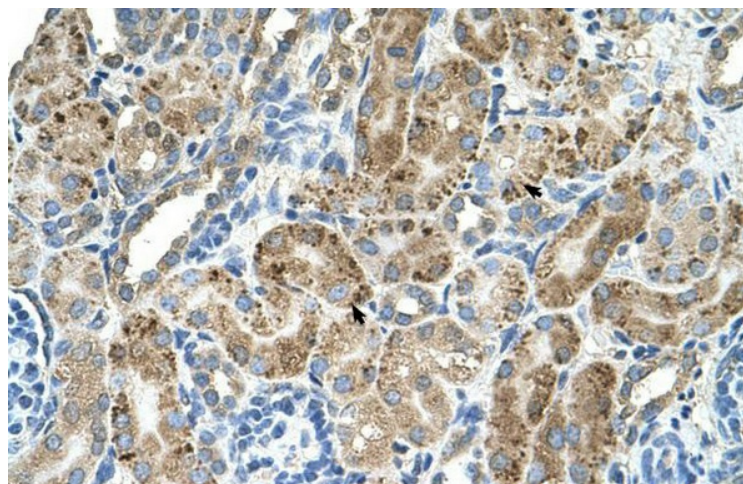


[View online »](#)

Product images:



WB Suggested Anti-VMA21 Antibody Titration: 5.0 ug/ml; Positive Control: HepG2 cell lysate



Human kidney