

## Product datasheet for **TA336066**

### PODXL Rabbit Polyclonal Antibody

#### Product data:

Product Type:	Primary Antibodies
Applications:	IHC, WB
Recommended Dilution:	WB, IHC
Reactivity:	Human
Host:	Rabbit
Isotype:	IgG
Clonality:	Polyclonal
Immunogen:	The immunogen for Anti-PODXL Antibody: synthetic peptide directed towards the middle region of human PODXL. Synthetic peptide located within the following region: PATALRTPTLPETMSSSPTAASTTHRYPKTPSPTVAHESNWAKCEDLETQ
Formulation:	Liquid. Purified antibody supplied in 1x PBS buffer with 0.09% (w/v) sodium azide and 2% sucrose.
Purification:	Affinity Purified
Conjugation:	Unconjugated
Storage:	Store at -20°C as received.
Stability:	Stable for 12 months from date of receipt.
Predicted Protein Size:	56 kDa
Gene Name:	podocalyxin like
Database Link:	<a href="#">NP_001018121</a> <a href="#">Entrez Gene 5420 Human</a> <a href="#">O00592</a>



[View online »](#)

**Background:**

PODXL is a member of the sialomucin protein family. PODXL was originally identified as an important component of glomerular podocytes. Podocytes are highly differentiated epithelial cells with interdigitating foot processes covering the outer aspect of the glomerular basement membrane. Other biological activities of the protein include: binding in a membrane protein complex with Na<sup>+</sup>/H<sup>+</sup> exchanger regulatory factor to intracellular cytoskeletal elements, playing a role in hematopoietic cell differentiation, and being expressed in vascular endothelium cells and binding to L-selectin. This gene encodes a member of the sialomucin protein family. The encoded protein was originally identified as an important component of glomerular podocytes. Podocytes are highly differentiated epithelial cells with interdigitating foot processes covering the outer aspect of the glomerular basement membrane. Other biological activities of the encoded protein include: binding in a membrane protein complex with Na<sup>+</sup>/H<sup>+</sup> exchanger regulatory factor to intracellular cytoskeletal elements, playing a role in hematopoietic cell differentiation, and being expressed in vascular endothelium cells and binding to L-selectin.

**Synonyms:**

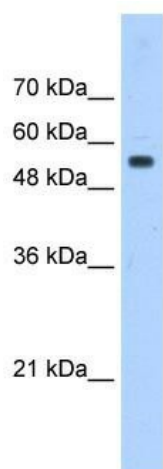
Gp200; PC; PCLP; PCLP-1

**Note:**

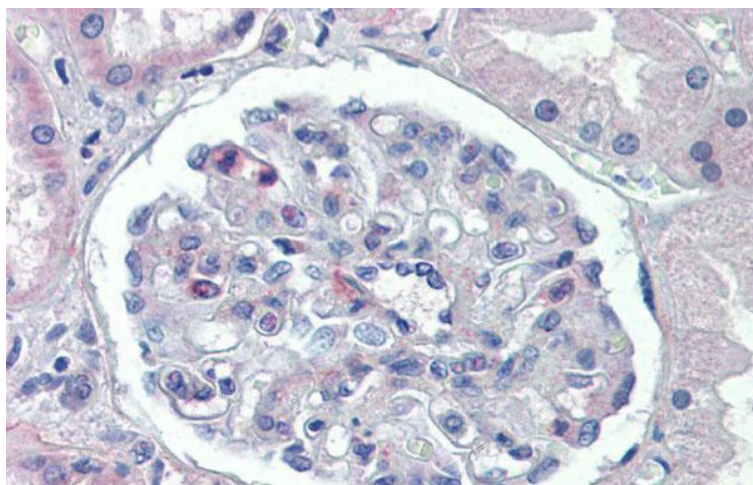
Immunogen Sequence Homology: Human: 100%

**Protein Families:**

Transmembrane

**Product images:**


WB Suggested Anti-PODXL Antibody Titration: 0.5 ug/ml; Positive Control: Jurkat cell lysate



Immunohistochemistry with Human kidney lysate tissue at an antibody concentration of 5.0 ug/ml using anti-PODXL antibody