

## Product datasheet for **TA336065**

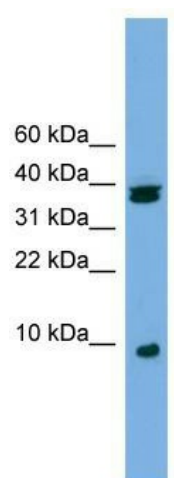
### RPS21 Rabbit Polyclonal Antibody

#### Product data:

Product Type:	Primary Antibodies
Applications:	WB
Recommended Dilution:	WB
Reactivity:	Human
Host:	Rabbit
Isotype:	IgG
Clonality:	Polyclonal
Immunogen:	The immunogen for Anti-RPS21 Antibody: synthetic peptide directed towards the middle region of human RPS21. Synthetic peptide located within the following region: NVAEVDKVTGRFNGQFKTYAICGAIRRMGESDDDSILRLAKADGIVSKNF
Formulation:	Liquid. Purified antibody supplied in 1x PBS buffer with 0.09% (w/v) sodium azide and 2% sucrose. <i>Note that this product is shipped as lyophilized powder to China customers.</i>
Purification:	Affinity Purified
Conjugation:	Unconjugated
Storage:	Store at -20°C as received.
Stability:	Stable for 12 months from date of receipt.
Predicted Protein Size:	9 kDa
Gene Name:	ribosomal protein S21
Database Link:	<a href="#">NP_001015</a> <a href="#">Entrez Gene 6227 Human</a> <a href="#">P63220</a>
Background:	The specific function of this protein remains unknown.
Synonyms:	HLDF; S21
Note:	Immunogen Sequence Homology: Dog: 100%; Pig: 100%; Rat: 100%; Human: 100%; Mouse: 100%; Bovine: 100%; Guinea pig: 100%; Rabbit: 86%; Zebrafish: 77%
Protein Pathways:	Ribosome



[View online »](#)

**Product images:**

WB Suggested Anti-RPS21 Antibody Titration: 0.2-1 ug/ml; ELISA Titer: 1:312500; Positive Control: Jurkat cell lysate. RPS21 is supported by BioGPS gene expression data to be expressed in Jurkat