

Product datasheet for **TA336063**

H2BC18 Rabbit Polyclonal Antibody

Product data:

Product Type:	Primary Antibodies
Applications:	WB
Recommended Dilution:	WB, ChIP
Reactivity:	Human
Host:	Rabbit
Isotype:	IgG
Clonality:	Polyclonal
Immunogen:	The immunogen for Anti-HIST2H2BF Antibody: synthetic peptide directed towards the N terminal of human HIST2H2BF. Synthetic peptide located within the following region: MPDPAKSAPAPKKGSKKAVTKVQKKDGGKRRSRKESYSVYVYKVLKQVH
Formulation:	Liquid. Purified antibody supplied in 1x PBS buffer with 0.09% (w/v) sodium azide and 2% sucrose. <i>Note that this product is shipped as lyophilized powder to China customers.</i>
Purification:	Affinity Purified
Conjugation:	Unconjugated
Storage:	Store at -20°C as received.
Stability:	Stable for 12 months from date of receipt.
Predicted Protein Size:	14 kDa
Gene Name:	histone cluster 2, H2bf
Database Link:	NP_001019770 Entrez Gene 440689 Human Q5QNW6
Background:	HIST2H2BF is the core component of nucleosome. Nucleosomes wrap and compact DNA into chromatin, limiting DNA accessibility to the cellular machineries which require DNA as a template. Histones thereby play a central role in transcription regulation, DNA repair, DNA replication and chromosomal stability. DNA accessibility is regulated via a complex set of post-translational modifications of histones, also called histone code, and nucleosome remodeling.



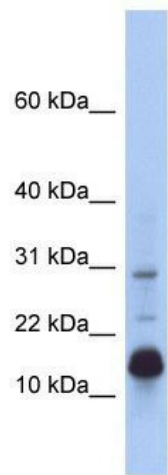
[View online »](#)

Synonyms: FLJ35099; FLJ56780; FLJ56787; MGC131639

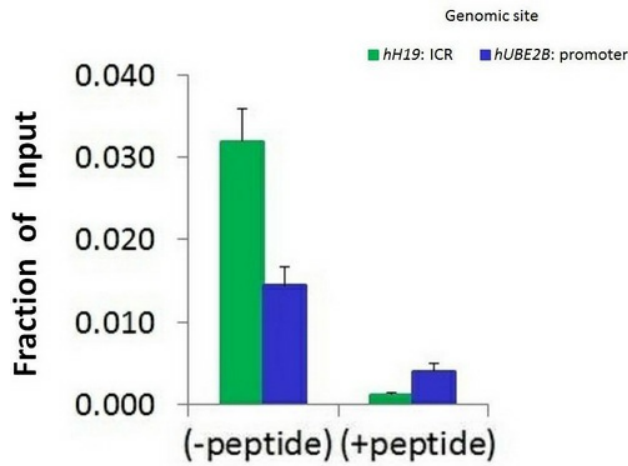
Note: Immunogen Sequence Homology: Dog: 100%; Pig: 100%; Rat: 100%; Horse: 100%; Human: 100%; Mouse: 100%; Bovine: 100%; Rabbit: 100%; Guinea pig: 100%

Protein Pathways: Systemic lupus erythematosus

Product images:



WB Suggested Anti-HIST2H2BF Antibody
Titration: 0.2-1 ug/ml; ELISA Titer: 1:62500;
Positive Control: Human Small Intestine



Chromatin Immunoprecipitation (ChIP) Using
HIST2H2BF antibody and HCT116 Cells