

## Product datasheet for **TA336062**

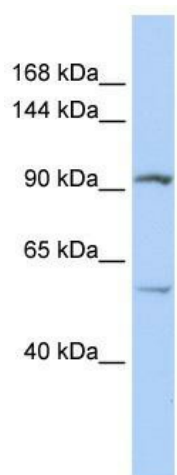
### LRRRC66 Rabbit Polyclonal Antibody

#### Product data:

Product Type:	Primary Antibodies
Applications:	WB
Recommended Dilution:	WB
Reactivity:	Human
Host:	Rabbit
Isotype:	IgG
Clonality:	Polyclonal
Immunogen:	The immunogen for Anti-LRRRC66 Antibody: synthetic peptide directed towards the middle region of human LRRRC66. Synthetic peptide located within the following region: NVTFTIPGKCKNQEDPFEKPLISAPDSGMYKTHLENASDTRSEGLSPW
Formulation:	Liquid. Purified antibody supplied in 1x PBS buffer with 0.09% (w/v) sodium azide and 2% sucrose. <i>Note that this product is shipped as lyophilized powder to China customers.</i>
Purification:	Affinity Purified
Conjugation:	Unconjugated
Storage:	Store at -20°C as received.
Stability:	Stable for 12 months from date of receipt.
Predicted Protein Size:	98 kDa
Gene Name:	leucine rich repeat containing 66
Database Link:	<a href="#">NP_001019782</a> <a href="#">Entrez Gene 339977 Human</a> <a href="#">Q68CR7</a>
Background:	The exact function of LOC339977 remains unknown.
Synonyms:	leucine rich repeat containing 66
Note:	Immunogen Sequence Homology: Human: 100%
Protein Families:	Transmembrane



[View online »](#)

**Product images:**

WB Suggested Anti-LRRC66 Antibody Titration:  
0.2-1 ug/ml; ELISA Titer: 1: 312500; Positive  
Control: Jurkat cell lysate