

Product datasheet for **TA336061**

LRRRC66 Rabbit Polyclonal Antibody

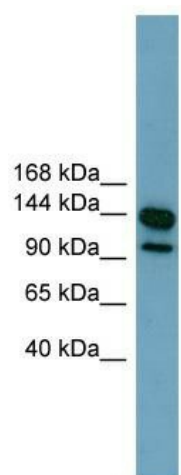
Product data:

| | |
|-------------------------|---|
| Product Type: | Primary Antibodies |
| Applications: | WB |
| Recommended Dilution: | WB |
| Reactivity: | Human |
| Host: | Rabbit |
| Isotype: | IgG |
| Clonality: | Polyclonal |
| Immunogen: | The immunogen for Anti-LRRRC66 Antibody: synthetic peptide directed towards the middle region of human LOC339977. Synthetic peptide located within the following region: ELDPSLSGEITASLCKMLTHAEAQRTGDSKERGGTEQSLWDSQMEFSKER |
| Formulation: | Liquid. Purified antibody supplied in 1x PBS buffer with 0.09% (w/v) sodium azide and 2% sucrose. <i>Note that this product is shipped as lyophilized powder to China customers.</i> |
| Purification: | Affinity Purified |
| Conjugation: | Unconjugated |
| Storage: | Store at -20°C as received. |
| Stability: | Stable for 12 months from date of receipt. |
| Predicted Protein Size: | 98 kDa |
| Gene Name: | leucine rich repeat containing 66 |
| Database Link: | NP_001019782 Entrez Gene 339977 Human Q68CR7 |
| Background: | The exact function of LOC339977 remains unknown. |
| Synonyms: | leucine rich repeat containing 66 |
| Note: | Immunogen Sequence Homology: Human: 100% |
| Protein Families: | Transmembrane |



[View online »](#)

Product images:



WB Suggested Anti-LRRC66 Antibody Titration:
0.2-1 ug/ml; Positive Control: ACHN cell lysate