

## Product datasheet for **TA336060**

### LETMD1 Rabbit Polyclonal Antibody

#### Product data:

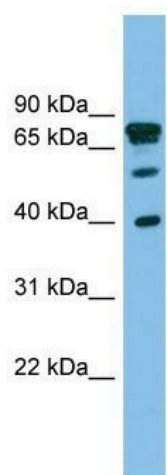
Product Type:	Primary Antibodies
Applications:	WB
Recommended Dilution:	WB
Reactivity:	Human
Host:	Rabbit
Isotype:	IgG
Clonality:	Polyclonal
Immunogen:	The immunogen for Anti-LETMD1 Antibody: synthetic peptide directed towards the middle region of human LETMD1. Synthetic peptide located within the following region: LLRHRLKHTTVIHQLDKALAKLGIGQLTAQEVKSACYLRGLNSTHIGED
Formulation:	Liquid. Purified antibody supplied in 1x PBS buffer with 0.09% (w/v) sodium azide and 2% sucrose. <i>Note that this product is shipped as lyophilized powder to China customers.</i>
Purification:	Affinity Purified
Conjugation:	Unconjugated
Storage:	Store at -20°C as received.
Stability:	Stable for 12 months from date of receipt.
Predicted Protein Size:	36 kDa
Gene Name:	LETM1 domain containing 1
Database Link:	<a href="#">NP_001019839</a> <a href="#">Entrez Gene 25875 Human</a> <a href="#">Q6P1Q0</a>
Background:	LETMD1 is involved in tumorigenesis and may function as a negative regulator of the TP53/p53.
Synonyms:	1110019O13Rik; DKFZp586A011; HCCR-1; HCCR-2; HCCR1; HCRR-2
Note:	Immunogen Sequence Homology: Pig: 100%; Horse: 100%; Human: 100%; Mouse: 100%; Guinea pig: 100%; Bovine: 93%; Rat: 92%; Dog: 86%; Rabbit: 86%



[View online »](#)

Protein Families: Druggable Genome, Transmembrane

### Product images:



WB Suggested Anti-LETMD1 Antibody Titration:  
0.2-1 ug/ml; ELISA Titer: 1: 312500; Positive  
Control: PANC1 cell lysate