

Product datasheet for **TA336059**

LRRC24 Rabbit Polyclonal Antibody

Product data:

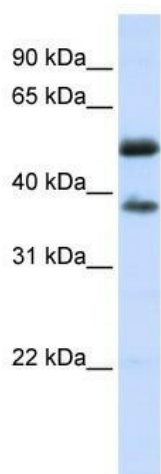
Product Type:	Primary Antibodies
Applications:	WB
Recommended Dilution:	WB
Reactivity:	Human
Host:	Rabbit
Isotype:	IgG
Clonality:	Polyclonal
Immunogen:	The immunogen for Anti-LRRC24 Antibody: synthetic peptide directed towards the N terminal of human LRRC24. Synthetic peptide located within the following region: HLPRLQELHLQENSIELLEDDQALAGLSSLALLDLSRNQLGTISREALQPL
Formulation:	Liquid. Purified antibody supplied in 1x PBS buffer with 0.09% (w/v) sodium azide and 2% sucrose. <i>Note that this product is shipped as lyophilized powder to China customers.</i>
Purification:	Affinity Purified
Conjugation:	Unconjugated
Storage:	Store at -20°C as received.
Stability:	Stable for 12 months from date of receipt.
Predicted Protein Size:	55 kDa
Gene Name:	leucine rich repeat containing 24
Database Link:	NP_001019849 Entrez Gene 441381 Human Q50LG9
Background:	LRRC24 contains 1 Ig-like C2-type (immunoglobulin-like) domain and 7 LRR (leucine-rich) repeats. It is a single-pass membrane protein. The function of the LRRC24 protein remains unknown.
Synonyms:	LRRC14OS
Note:	Immunogen Sequence Homology: Pig: 100%; Rat: 100%; Horse: 100%; Human: 100%; Mouse: 100%; Bovine: 100%; Guinea pig: 100%; Dog: 93%



[View online »](#)

Protein Families: Transmembrane

Product images:



WB Suggested Anti-LRRC24 Antibody Titration:
0.2-1 ug/ml; ELISA Titer: 1: 62500; Positive
Control: Human heart