

Product datasheet for **TA336057**

TRIM17 Rabbit Polyclonal Antibody

Product data:

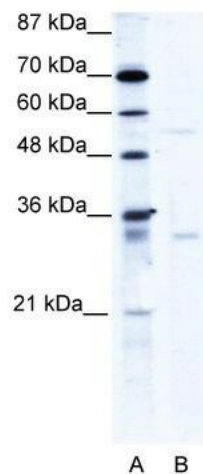
Product Type:	Primary Antibodies
Applications:	WB
Recommended Dilution:	WB
Reactivity:	Human
Host:	Rabbit
Isotype:	IgG
Clonality:	Polyclonal
Immunogen:	The immunogen for Anti-TRIM17 Antibody: synthetic peptide directed towards the C terminal of human TRIM17. Synthetic peptide located within the following region: PKCPENGFVVVQLSKGTKYLSTFSALTPVMLMEPPSHMGIFLDFEAGEVS
Formulation:	Liquid. Purified antibody supplied in 1x PBS buffer with 0.09% (w/v) sodium azide and 2% sucrose.
Purification:	Protein A purified
Conjugation:	Unconjugated
Storage:	Store at -20°C as received.
Stability:	Stable for 12 months from date of receipt.
Predicted Protein Size:	54 kDa
Gene Name:	tripartite motif containing 17
Database Link:	NP_001020111 Entrez Gene 51127 Human Q9Y577
Background:	TRIM17 is a member of the tripartite motif (TRIM) family. The TRIM motif includes three zinc-binding domains, a RING, a B-box type 1 and a B-box type 2, and a coiled-coil region. The protein localizes to cytoplasmic bodies. The protein is expressed almost exclusively in the testis, but its function is unknown. Multiple alternatively spliced transcript variants have been found for this gene.
Synonyms:	RBCC; RNF16; terf
Note:	Immunogen Sequence Homology: Human: 100%



[View online »](#)

Protein Families: Druggable Genome

Product images:



WB Suggested Anti-TRIM17 Antibody Titration:
1.25 ug/ml; ELISA Titer: 1:1562500; Positive
Control: HepG2 cell lysate