

Product datasheet for **TA336056**

TRIM17 Rabbit Polyclonal Antibody

Product data:

Product Type:	Primary Antibodies
Applications:	IHC, WB
Recommended Dilution:	WB, IHC
Reactivity:	Human
Host:	Rabbit
Isotype:	IgG
Clonality:	Polyclonal
Immunogen:	The immunogen for Anti-TRIM17 Antibody: synthetic peptide directed towards the middle region of human TRIM17. Synthetic peptide located within the following region: MKEPLSRKNNVSVQCPEVAPPTRPRTVCRVPGQIEVLRGFLEDVVPDATS
Formulation:	Liquid. Purified antibody supplied in 1x PBS buffer with 0.09% (w/v) sodium azide and 2% sucrose. <i>Note that this product is shipped as lyophilized powder to China customers.</i>
Purification:	Affinity Purified
Conjugation:	Unconjugated
Storage:	Store at -20°C as received.
Stability:	Stable for 12 months from date of receipt.
Predicted Protein Size:	54 kDa
Gene Name:	tripartite motif containing 17
Database Link:	NP_001020111 Entrez Gene 51127 Human Q9Y577
Background:	TRIM17 encodes a protein that is a member of the tripartite motif (TRIM) family. The TRIM motif includes three zinc-binding domains, a RING, a B-box type 1 and a B-box type 2, and a coiled-coil region. The protein localizes to cytoplasmic bodies. The protein is expressed at high levels in the testis, but its function is unknown.
Synonyms:	RBCC; RNF16; terf



[View online »](#)

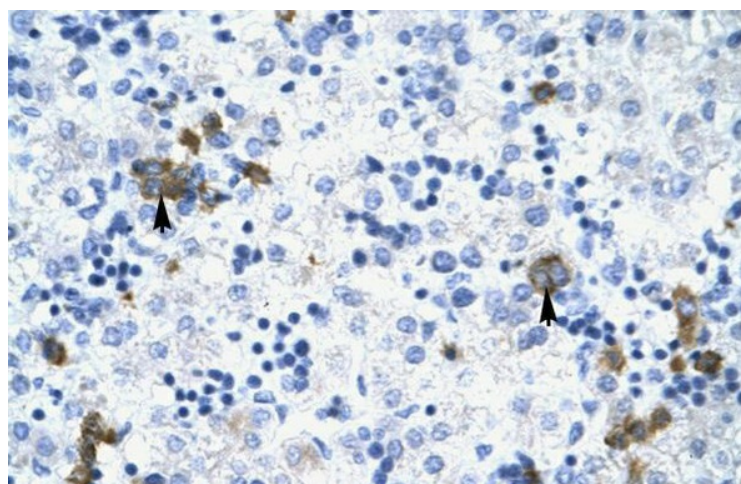
Note: Immunogen Sequence Homology: Human: 100%; Rabbit: 86%; Dog: 79%; Rat: 79%; Yeast: 79%; Bovine: 79%; Pig: 77%; Mouse: 77%

Protein Families: Druggable Genome

Product images:



WB Suggested Anti-TRIM17 Antibody Titration:
0.12 ug/ml; ELISA Titer: 1:62500; Positive Control:
Jurkat cell lysate



Human Liver