

Product datasheet for **TA336054**

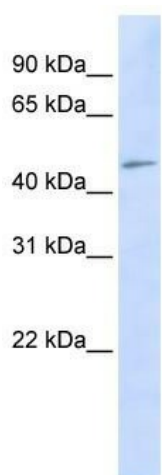
C3orf17 (NEPRO) Rabbit Polyclonal Antibody

Product data:

Product Type:	Primary Antibodies
Applications:	WB
Recommended Dilution:	WB
Reactivity:	Human
Host:	Rabbit
Isotype:	IgG
Clonality:	Polyclonal
Immunogen:	The immunogen for Anti-C3orf17 Antibody: synthetic peptide directed towards the middle region of human C3orf17. Synthetic peptide located within the following region: KLQSTLLREIQFSQGRKTSATDTSKRWRLSHCTVHRTDLYPNSKQLLNS
Formulation:	Liquid. Purified antibody supplied in 1x PBS buffer with 0.09% (w/v) sodium azide and 2% sucrose. <i>Note that this product is shipped as lyophilized powder to China customers.</i>
Purification:	Affinity Purified
Conjugation:	Unconjugated
Storage:	Store at -20°C as received.
Stability:	Stable for 12 months from date of receipt.
Predicted Protein Size:	49 kDa
Gene Name:	nucleolus and neural progenitor protein
Database Link:	NP_001020243 Entrez Gene 25871 Human Q6NW34
Background:	The function of the C3orf17 protein remains unknown.
Synonyms:	DKFZp434F2021
Note:	Immunogen Sequence Homology: Human: 100%
Protein Families:	Transmembrane



[View online »](#)

Product images:

WB Suggested Anti-C3orf17 Antibody Titration:
0.2-1 ug/ml; ELISA Titer: 1: 312500; Positive
Control: HeLa cell lysate