

Product datasheet for **TA336050**

IFITM5 Rabbit Polyclonal Antibody

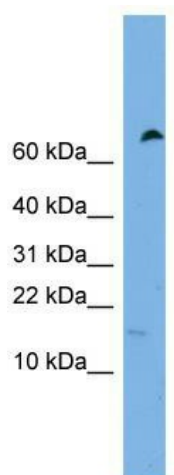
Product data:

Product Type:	Primary Antibodies
Applications:	WB
Recommended Dilution:	WB
Reactivity:	Human
Host:	Rabbit
Isotype:	IgG
Clonality:	Polyclonal
Immunogen:	The immunogen for Anti-IFITM5 Antibody: synthetic peptide directed towards the middle region of human IFITM5. Synthetic peptide located within the following region: AKCYNILAAMWTLVPPLLLLGLVVTGALHLARLAKDSAAFFSTKFDDADY
Formulation:	Liquid. Purified antibody supplied in 1x PBS buffer with 0.09% (w/v) sodium azide and 2% sucrose.
Purification:	Affinity Purified
Conjugation:	Unconjugated
Storage:	Store at -20°C as received.
Stability:	Stable for 12 months from date of receipt.
Predicted Protein Size:	14 kDa
Gene Name:	interferon induced transmembrane protein 5
Database Link:	NP_001020466 Entrez Gene 387733 Human A6NNB3
Background:	IFITM5 plays a role in bone mineralization.
Synonyms:	BRIL; DSPA1; fragilis4; Hrmp1; OI5
Note:	Immunogen Sequence Homology: Pig: 100%; Rat: 100%; Horse: 100%; Human: 100%; Guinea pig: 100%; Bovine: 93%; Mouse: 92%
Protein Families:	Transmembrane



[View online »](#)

Product images:



WB Suggested Anti-IFITM5 Antibody Titration: 0.2-1 ug/ml; Positive Control: Hela cell lysate