

## Product datasheet for **TA336049**

### ANO6 Rabbit Polyclonal Antibody

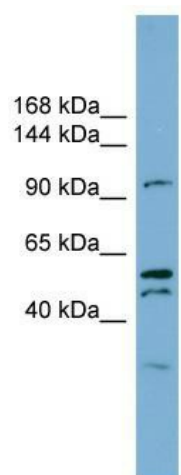
#### Product data:

Product Type:	Primary Antibodies
Applications:	WB
Recommended Dilution:	WB
Reactivity:	Human
Host:	Rabbit
Isotype:	IgG
Clonality:	Polyclonal
Immunogen:	The immunogen for Anti-ANO6 Antibody: synthetic peptide directed towards the C-terminal region of human ANO6. Synthetic peptide located within the following region: KSKGNPYSDLGNHTTCRYRDFRYPPGHPQEYKHNIYYWHVIAAKLAFIV
Formulation:	Liquid. Purified antibody supplied in 1x PBS buffer with 0.09% (w/v) sodium azide and 2% sucrose. <i>Note that this product is shipped as lyophilized powder to China customers.</i>
Purification:	Affinity Purified
Conjugation:	Unconjugated
Storage:	Store at -20°C as received.
Stability:	Stable for 12 months from date of receipt.
Predicted Protein Size:	106 kDa
Gene Name:	anoctamin 6
Database Link:	<a href="#">NP_001020527</a> <a href="#">Entrez Gene 196527 Human</a> <a href="#">Q4KMQ2</a>
Background:	TMEM16F may act as a calcium-activated chloride channel.
Synonyms:	BDPLT7; SCTS; TMEM16F
Note:	Immunogen Sequence Homology: Human: 100%; Bovine: 100%; Rabbit: 100%; Dog: 93%; Pig: 93%; Rat: 93%; Horse: 93%; Mouse: 93%; Guinea pig: 93%
Protein Families:	Transmembrane



[View online »](#)

## Product images:



WB Suggested Anti-ANO6 Antibody Titration: 0.2-1 ug/ml; Positive Control: OVCAR-3 cell lysate