

Product datasheet for **TA336048**

ANO6 Rabbit Polyclonal Antibody

Product data:

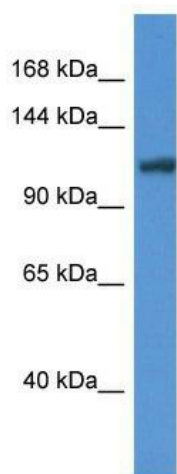
Product Type:	Primary Antibodies
Applications:	WB
Recommended Dilution:	WB
Reactivity:	Mouse
Host:	Rabbit
Isotype:	IgG
Clonality:	Polyclonal
Immunogen:	The immunogen for Anti-Ano6 Antibody: synthetic peptide corresponding to a region of Mouse. Synthetic peptide located within the following region: SVFIVFSTTLPKNPNGTDPIQKYLTQMATSITASIISFIIIMILNTIYE
Formulation:	Liquid. Purified antibody supplied in 1x PBS buffer with 0.09% (w/v) sodium azide and 2% sucrose. <i>Note that this product is shipped as lyophilized powder to China customers.</i>
Purification:	Affinity Purified
Conjugation:	Unconjugated
Storage:	Store at -20°C as received.
Stability:	Stable for 12 months from date of receipt.
Predicted Protein Size:	106 kDa
Gene Name:	anoctamin 6
Database Link:	NP_001020527 Entrez Gene 105722 Mouse Q4KMQ2
Background:	Ano6 may act as a calcium-activated chloride channel By similarity. It is essential for calcium-dependent exposure of phosphatidylserine on the surface of activated platelets, a process necessary to trigger the clotting system.
Synonyms:	BDPLT7; SCTS; TMEM16F
Note:	Immunogen Sequence Homology: Human: 100%; Pig: 93%; Rat: 92%; Mouse: 92%; Guinea pig: 77%



[View online »](#)

Protein Families: Transmembrane

Product images:



WB Suggested Anti-Ano6 Antibody; Titration: 1.0 ug/ml; Positive Control: Mouse Liver