

Product datasheet for **TA336047**

AP2B1 Rabbit Polyclonal Antibody

Product data:

Product Type:	Primary Antibodies
Applications:	WB
Recommended Dilution:	WB
Reactivity:	Human
Host:	Rabbit
Isotype:	IgG
Clonality:	Polyclonal
Immunogen:	The immunogen for Anti-AP2B1 Antibody: synthetic peptide directed towards the middle region of human AP2B1. Synthetic peptide located within the following region: DMLYQSLKLTNGIWILAE LR IQPGNP NYT LSLKCR APEV SQYIYQVYDSI
Formulation:	Liquid. Purified antibody supplied in 1x PBS buffer with 0.09% (w/v) sodium azide and 2% sucrose. <i>Note that this product is shipped as lyophilized powder to China customers.</i>
Purification:	Affinity Purified
Conjugation:	Unconjugated
Storage:	Store at -20°C as received.
Stability:	Stable for 12 months from date of receipt.
Predicted Protein Size:	105 kDa
Gene Name:	adaptor related protein complex 2 beta 1 subunit
Database Link:	NP_001025177 Entrez Gene 163 Human P63010



[View online »](#)

Background: AP2B1 is one of two large chain components of the assembly protein complex 2, which serves to link clathrin to receptors in coated vesicles. AP2B1 is found on the cytoplasmic face of coated vesicles in the plasma membrane. The protein encoded by this gene is one of two large chain components of the assembly protein complex 2, which serves to link clathrin to receptors in coated vesicles. The encoded protein is found on the cytoplasmic face of coated vesicles in the plasma membrane. Two transcript variants encoding different isoforms have been found for this gene.

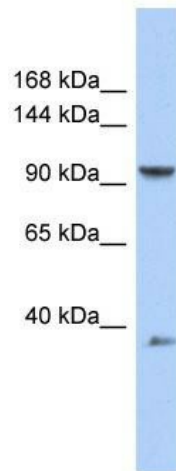
Synonyms: ADTB2; AP2-BETA; AP105B; CLAPB1

Note: Immunogen Sequence Homology: Dog: 100%; Pig: 100%; Rat: 100%; Horse: 100%; Human: 100%; Mouse: 100%; Bovine: 100%; Rabbit: 100%; Zebrafish: 100%; Guinea pig: 100%

Protein Families: Druggable Genome

Protein Pathways: Endocytosis, Huntington's disease

Product images:



WB Suggested Anti-AP2B1 Antibody Titration: 0.2-1 ug/ml; ELISA Titer: 1: 1562500; Positive Control: OVCAR-3 cell lysate. AP2B1 is supported by BioGPS gene expression data to be expressed in OVCAR3