

Product datasheet for **TA336043**

CYB5RL Rabbit Polyclonal Antibody

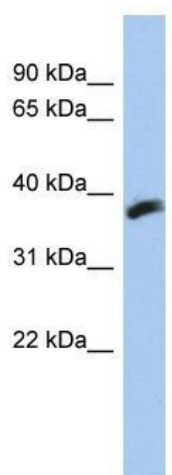
Product data:

Product Type:	Primary Antibodies
Applications:	WB
Recommended Dilution:	WB
Reactivity:	Human
Host:	Rabbit
Isotype:	IgG
Clonality:	Polyclonal
Immunogen:	The immunogen for Anti-CYB5RL Antibody: synthetic peptide directed towards the N terminal of human LOC606495. Synthetic peptide located within the following region: KLNPFVFAFCIIAMDRLTKDTYRVRFALPGNSQLGLRPGQHILIRGIVD
Formulation:	Liquid. Purified antibody supplied in 1x PBS buffer with 0.09% (w/v) sodium azide and 2% sucrose. <i>Note that this product is shipped as lyophilized powder to China customers.</i>
Purification:	Affinity Purified
Conjugation:	Unconjugated
Storage:	Store at -20°C as received.
Stability:	Stable for 12 months from date of receipt.
Predicted Protein Size:	36 kDa
Gene Name:	cytochrome b5 reductase like
Database Link:	NP_001026842 Entrez Gene 606495 Human Q6IPT4
Background:	The specific function of this protein remains unknown.
Synonyms:	FLJ16295
Note:	Immunogen Sequence Homology: Dog: 100%; Pig: 100%; Human: 100%; Bovine: 100%; Guinea pig: 100%; Rat: 93%; Horse: 93%; Mouse: 93%; Rabbit: 93%



[View online »](#)

Product images:



WB Suggested Anti-CYB5RL Antibody Titration:
0.2-1 ug/ml; ELISA Titer: 1:1562500; Positive
Control: HT1080 cell lysate