

Product datasheet for **TA336041**

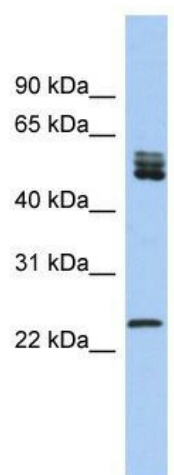
SFRS7 (SRSF7) Rabbit Polyclonal Antibody

Product data:

Product Type:	Primary Antibodies
Applications:	WB
Recommended Dilution:	WB
Reactivity:	Human
Host:	Rabbit
Isotype:	IgG
Clonality:	Polyclonal
Immunogen:	The immunogen for Anti-SFRS7 Antibody: synthetic peptide directed towards the N terminal of human SFRS7. Synthetic peptide located within the following region: MSRYGRYGGGETKYVVGNLGTGAGKGELERAFSYYGPLRTVWIARNPPGFA
Formulation:	Liquid. Purified antibody supplied in 1x PBS buffer with 0.09% (w/v) sodium azide and 2% sucrose. <i>Note that this product is shipped as lyophilized powder to China customers.</i>
Purification:	Affinity Purified
Conjugation:	Unconjugated
Storage:	Store at -20°C as received.
Stability:	Stable for 12 months from date of receipt.
Predicted Protein Size:	27 kDa
Gene Name:	serine/arginine-rich splicing factor 7
Database Link:	NP_001026854 Entrez Gene 6432 Human Q16629
Background:	SFRS7 is required for pre-mRNA splicing. SFRS7 can also modulate alternative splicing in vitro.
Synonyms:	9G8; AAG3; SFRS7
Note:	Immunogen Sequence Homology: Dog: 100%; Pig: 100%; Rat: 100%; Horse: 100%; Human: 100%; Mouse: 100%; Bovine: 100%; Rabbit: 100%; Zebrafish: 100%; Guinea pig: 100%
Protein Pathways:	Spliceosome



[View online »](#)

Product images:

WB Suggested Anti-SFRS7 Antibody Titration: 0.2-1 ug/ml; ELISA Titer: 1:62500; Positive Control: Human Lung