

## Product datasheet for **TA336040**

### PLD3 Rabbit Polyclonal Antibody

#### Product data:

Product Type:	Primary Antibodies
Applications:	WB
Recommended Dilution:	WB
Reactivity:	Human
Host:	Rabbit
Isotype:	IgG
Clonality:	Polyclonal
Immunogen:	The immunogen for Anti-PLD3 Antibody: synthetic peptide directed towards the N terminal of human PLD3. Synthetic peptide located within the following region: WVLLVLILAVVGFGALMTQLFLWEYGDLHLFGPNQRPAPCYDPCEAVLVE
Formulation:	Liquid. Purified antibody supplied in 1x PBS buffer with 0.09% (w/v) sodium azide and 2% sucrose. <i>Note that this product is shipped as lyophilized powder to China customers.</i>
Purification:	Affinity Purified
Conjugation:	Unconjugated
Storage:	Store at -20°C as received.
Stability:	Stable for 12 months from date of receipt.
Predicted Protein Size:	55 kDa
Gene Name:	phospholipase D family member 3
Database Link:	<a href="#">NP_001026866</a> <a href="#">Entrez Gene 23646 Human</a> <a href="#">Q8IV08</a>
Background:	PLD3 is a single-pass type II membrane protein. It belongs to the phospholipase D family. PLD3 contains 2 PLD phosphodiesterase domains. The exact function of PLD3 remains unknown.
Synonyms:	AD19; HU-K4; HUK4
Note:	Immunogen Sequence Homology: Dog: 100%; Pig: 100%; Rat: 100%; Horse: 100%; Human: 100%; Mouse: 100%; Bovine: 100%; Rabbit: 100%; Guinea pig: 100%



[View online »](#)

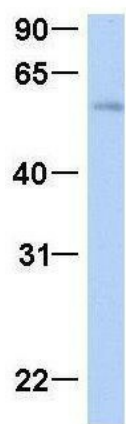
Protein Families: Transmembrane

## Product images:



WB Suggested Anti-PLD3 Antibody Titration: 0.2-1 ug/ml; Positive Control: Human heart

## PLD3



Rabbit Anti-PLD3  
Sample Type: Human Fetal Heart  
Antibody Concentration: 1ug/mL

Host: Rabbit; Target Name: PLD3; Sample Tissue: Human Fetal Heart; Antibody Dilution: 1.0 ug/ml