

Product datasheet for **TA336038**

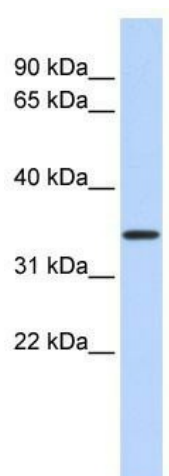
CCDC90A (MCUR1) Rabbit Polyclonal Antibody

Product data:

Product Type:	Primary Antibodies
Applications:	WB
Recommended Dilution:	WB
Reactivity:	Human
Host:	Rabbit
Isotype:	IgG
Clonality:	Polyclonal
Immunogen:	The immunogen for Anti-CCDC90A Antibody: synthetic peptide directed towards the middle region of human CCDC90A. Synthetic peptide located within the following region: ELHQLKQQVMDEVIKVRTDTKLDNFLEKSRVKELYSLNKLLLELRTEIV
Formulation:	Liquid. Purified antibody supplied in 1x PBS buffer with 0.09% (w/v) sodium azide and 2% sucrose.
Purification:	Affinity Purified
Conjugation:	Unconjugated
Storage:	Store at -20°C as received.
Stability:	Stable for 12 months from date of receipt.
Predicted Protein Size:	40 kDa
Gene Name:	mitochondrial calcium uniporter regulator 1
Database Link:	NP_001026883 Entrez Gene 63933 Human Q96AQ8
Background:	Essential component of mitochondrial Ca ²⁺ uptake that regulates cellular metabolism.
Synonyms:	C6orf79; CCDC90A; FMP32
Note:	Immunogen Sequence Homology: Human: 100%; Pig: 93%; Rat: 93%; Mouse: 93%; Guinea pig: 93%; Dog: 86%; Horse: 86%; Bovine: 79%
Protein Families:	Transmembrane



[View online »](#)

Product images:

WB Suggested Anti-CCDC90A Antibody Titration:
0.2-1 ug/ml; ELISA Titer: 1: 1562500; Positive
Control: Human brain